

YUMA, ARIZONA

VOR/DME RNAV RWY 21R

VORTAC BZA 116.8 Chan 115	APCH CRS 211°	Rwy Idg 13,300 TDZE 195 Arpt Elev 213
---	-------------------------	--

AL-511 [USN]

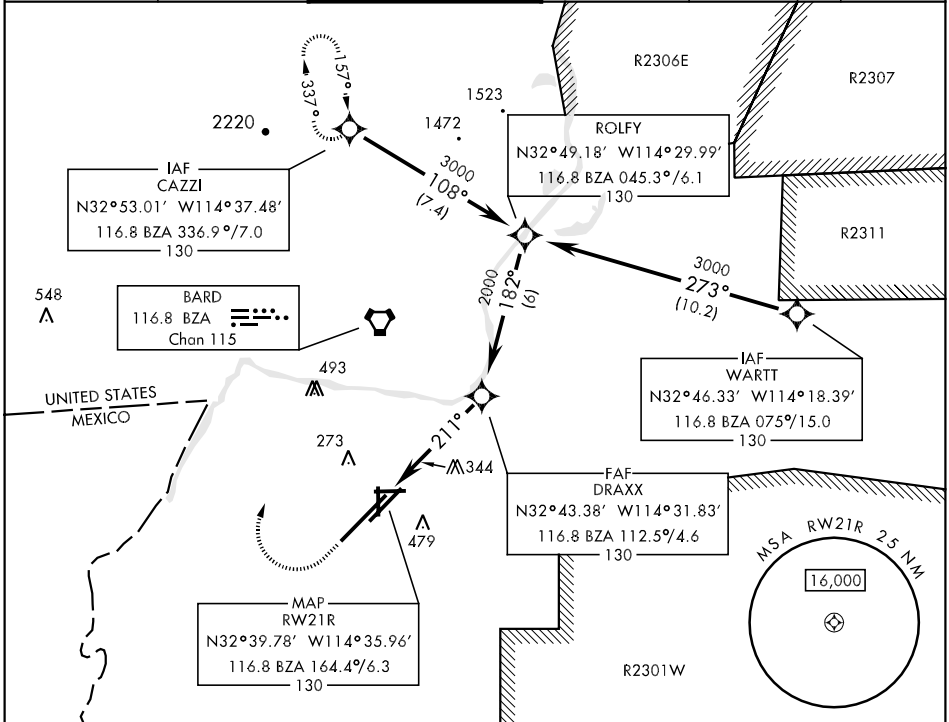
YUMA MCAS/YUMA INTL (KNYL)

▼ * When ALS inop, increase vis CAT AB to 1 mile, CAT C to 1½ miles, CAT D to 1½ miles.



MISSED APPROACH: Climb to 1000, then climbing right turn to 4000 direct BZA VORTAC and course 338° to CAZZI WP and hold.

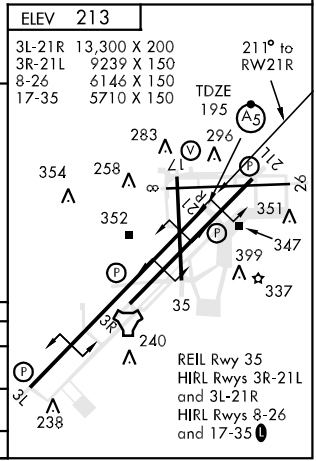
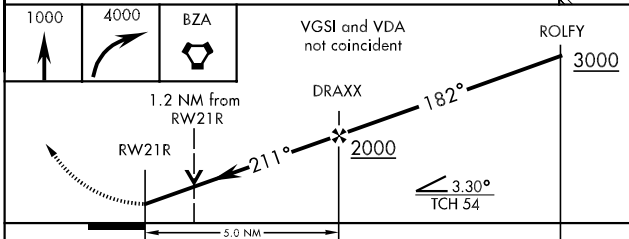
ATIS ★ 118.8 273.2	YUMA APP CON 124.7 374.8	YUMA TOWER ★ 119.3 (CTAF) 0 382.8	GND CON 121.9 315.7	CLNC DEL 118.0 336.4	ASR/PAR
------------------------------	------------------------------------	---	-------------------------------	--------------------------------	---------



SW-4, 22 OCT 2009 to 19 NOV 2009

SW-4, 22 OCT 2009 to 19 NOV 2009

EMERG SAFE ALT 100 NM 17,000



CATEGORY	A		B		C		D	
S-21R*	660-½	465 (500-½)	465 (500-¾)	465 (500-1)	660-¾	465 (500-¾)	465 (500-1)	660-1
CIRCLING	700-1	484 (500-1)	700-1½	484 (500-1½)	700-1½	484 (500-1½)	780-2	564 (600-2)
S-PAR 21R	295-½		100		(100-½)		GS 3.0°	

YUMA, ARIZONA
09295

32°39'N-114°36'W

YUMA MCAS/YUMA INTL (KNYL)

VOR/DME RNAV RWY 21R