

YUMA, ARIZONA

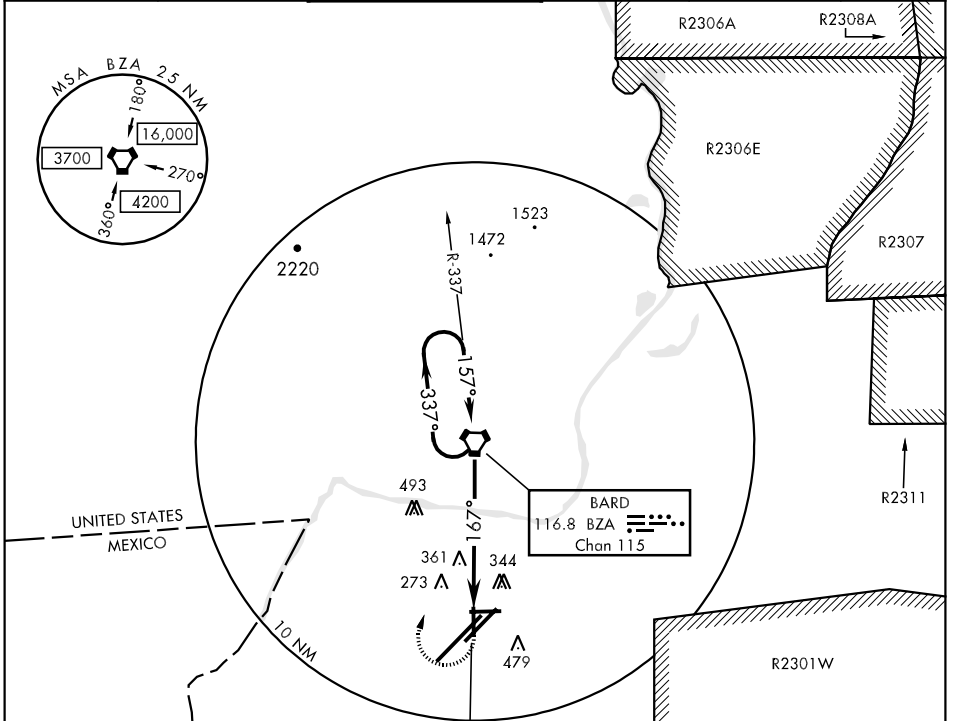
VORTAC BZA 116.8 Chan 115	APCH CRS 167°	Rwy Idg TDZE Arpt Elev 5710 199 213
---------------------------------	------------------	--

AL-511 [USN]

VOR RWY 17  
YUMA MCAS/YUMA INTL (KNYL)

**MISSED APPROACH:** Climb to 1000, then climbing right turn to 2800 direct BZA VORTAC and hold.

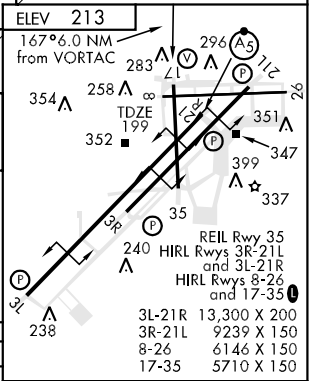
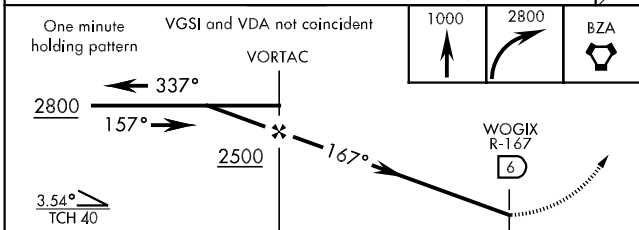
ATIS ★ 118.8 273.2	YUMA APP CON 124.7 374.8	YUMA TOWER ★ 119.3 (CTAF) 0 382.8	GND CON 121.9 315.7	CLNC DEL 118.0 336.4	ASR/PAR
-----------------------	-----------------------------	--------------------------------------	------------------------	-------------------------	---------



SW-4, 22 OCT 2009 to 19 NOV 2009

SW-4, 22 OCT 2009 to 19 NOV 2009

EMERG SAFE ALT 100 NM 17,000



CATEGORY	A	B	C	D
S-17	680-1	481 (500-1)		NA
CIRCLING	700-1	484 (500-1)		NA

FAF to MAP 6.0 NM					
Knots	60	90	120	150	180
Min:Sec	6:00	4:00	3:00	2:24	2:00

YUMA, ARIZONA  
09295

32°39'N-114°36'W

YUMA MCAS/YUMA INTL (KNYL)  
VOR RWY 17