

YUMA, ARIZONA

# TACAN RWY 21R

YUMA MCAS/YUMA INTL (KNYL)

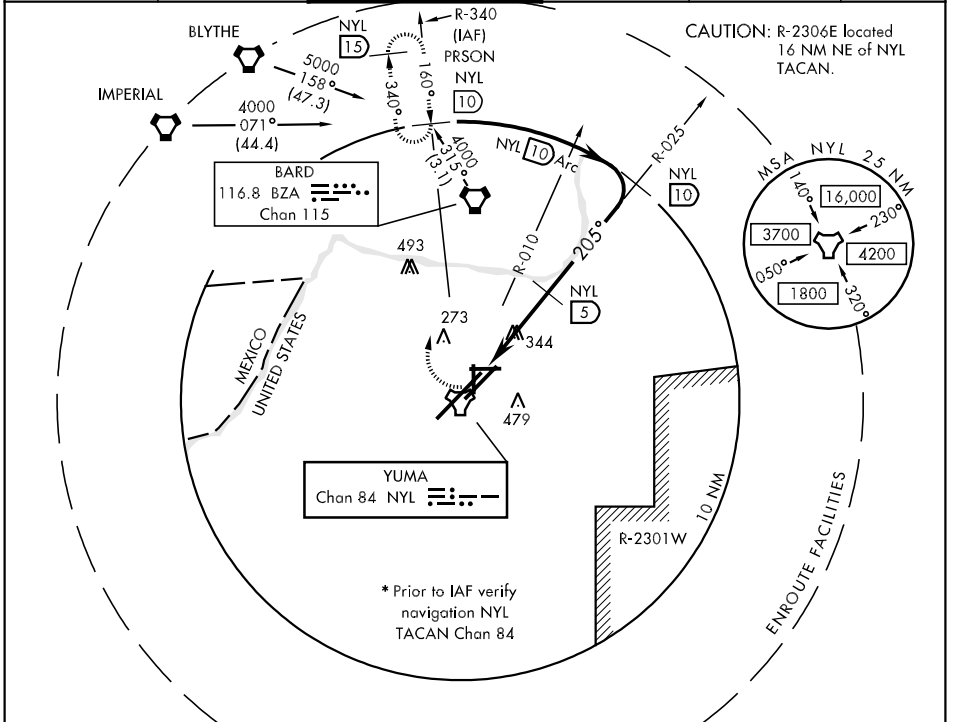
TACAN NYL Chan <b>84</b>	APCH CRS <b>205°</b>	Rwy Idg <b>13,300</b> TDZE <b>195</b> Arpt Elev <b>213</b>
-----------------------------	-------------------------	--

AL-511 [USN]



MISSED APPROACH: Climbing right turn to 4000 via NYL TACAN R-340 to PRSON and hold.

ATIS ★ <b>118.8 273.2</b>	YUMA APP CON <b>124.7 374.8</b>	YUMA TOWER ★ <b>119.3 (CTAF) 382.8</b>	GND CON <b>121.9 315.7</b>	CLNC DEL <b>118.0 336.4</b>	ASR/PAR
------------------------------	------------------------------------	---	-------------------------------	--------------------------------	---------



SW-4, 22 OCT 2009 to 19 NOV 2009

SW-4, 22 OCT 2009 to 19 NOV 2009

EMERG SAFE ALT 100 NM 17,000

4000 NYL R-340	PRSON NYL 10	* PRSON R-340 10
----------------	--------------	------------------

CATEGORY	A	B	C	D
S-21R**	620-½ 425 (500-½)		620-¾ 425 (500-¾)	
CIRCLING	700-1 484 (500-1)		700-1½ 484 (500-1½)	780-2 564 (600-2)
S-PAR 21R**	295-½	100	(100-½)	GS 3.0°

ELEV 213	3L-21R 13,300 X 200	3R-21L 9239 X 150	8-26 6146 X 150	17-35 5710 X 150
----------	---------------------	-------------------	-----------------	------------------

REIL Rwy 35  
HIRL Rwys 3R-21L and 3L-21R  
HIRL Rwys 8-26 and 17-35

YUMA, ARIZONA  
09295

32°39'N-114°36'W

YUMA MCAS/YUMA INTL (KNYL)

# TACAN RWY 21R