

YUMA, ARIZONA

# RNAV (GPS) RWY 17

YUMA MCAS/YUMA INTL (KNYL)

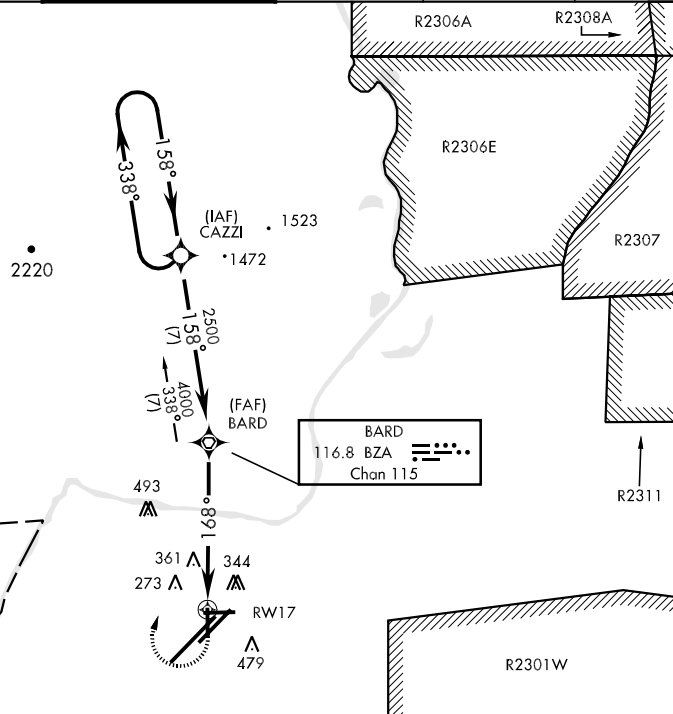
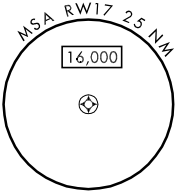
APCH CRS	Rwy Idg	5710
168°	TDZE	199
	Arpt Elev	213

AL-511 [USN]



MISSED APPROACH: Climb to 1000, then climbing right turn to 4000 direct BZA VORTAC, and crs 338° to CAZZI and hold.

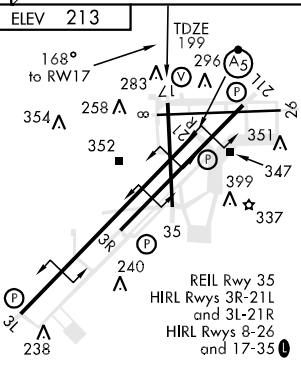
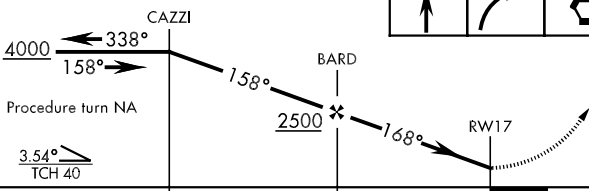
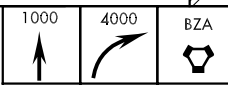
ATIS ★	YUMA APP CON	YUMA TOWER ★	GND CON	CLNC DEL	ASR/PAR
118.8 273.2	124.7 374.8	119.3 (CTAF) 0 382.8	121.9 315.7	118.0 336.4	



UNITED STATES  
MEXICO

EMERG SAFE ALT 100 NM 17,000

VGSI and VDA not coincident.



CATEGORY	A	B	C	D
LNVA MDA	680-1	481 (500-1)	680-1½ 481 (500-1½)	680-1½ 481 (500-1½)
CIRCLING	700-1	484 (500-1)	700-1½ 484 (500-1½)	780-2 564 (600-2)

YUMA, ARIZONA  
09295

32°39'N-114°36'W

YUMA MCAS/YUMA INTL (KNYL)

# RNAV (GPS) RWY 17

SW-4, 22 OCT 2009 to 19 NOV 2009

SW-4, 22 OCT 2009 to 19 NOV 2009