

08213

SHL-511 [USN]

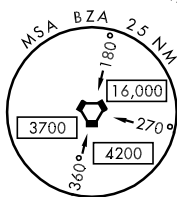
YUMA MCAS/YUMA INTL (KNYL)

# MOHAK-ONE DEPARTURE (MOHAK1•MOHAK)

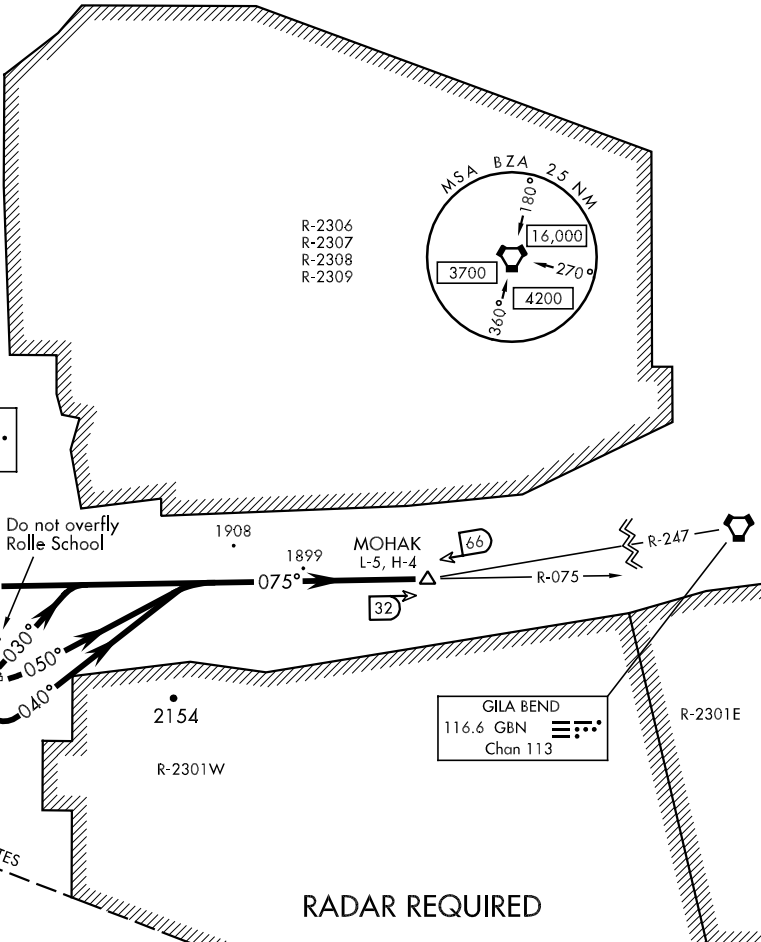
YUMA, ARIZONA

ATIS ★  
 118.8 273.2  
 CLNC DEL  
 118.0 336.4  
 GND CON  
 121.9 315.7  
 YUMA TOWER ★  
 119.3 (CTAF) 382.8  
 YUMA DEP CON  
 125.55 281.0

R-2306  
 R-2307  
 R-2308  
 R-2309



BARD  
 116.8 BZA  
 Chan 115



## RADAR REQUIRED

SW-4, 22 OCT 2009 to 19 NOV 2009

SW-4, 22 OCT 2009 to 19 NOV 2009

### DEPARTURE ROUTE DESCRIPTION

ALL RWY: Cross the Departure End of Runway at or above 35' AGL.

TAKE-OFF RWY 3L/R: Fly heading 030° to join and.....

TAKE-OFF RWY 8: Turn left heading 050° to join and.....

TAKE-OFF RWY 17: Turn left heading 040° to join and.....

TAKE-OFF RWY 21L/R: Fly heading 210° until passing southwest field boundary; then turn right direct BZA VORTAC, then.....

TAKE-OFF RWY 26: Turn right direct BZA VORTAC, then.....

TAKE-OFF RWY 35: Climb BZA VORTAC, then.....

Fly BZA R-075 to MOHAK INT, then via assigned route. Maintain assigned altitude. Expect clearance to filed altitude/flight level 10 minutes after departure.

# MOHAK-ONE DEPARTURE (MOHAK1•MOHAK)

YUMA, ARIZONA

YUMA MCAS/YUMA INTL (KNYL)