

YUMA, ARIZONA

ILS or LOC RWY 21R

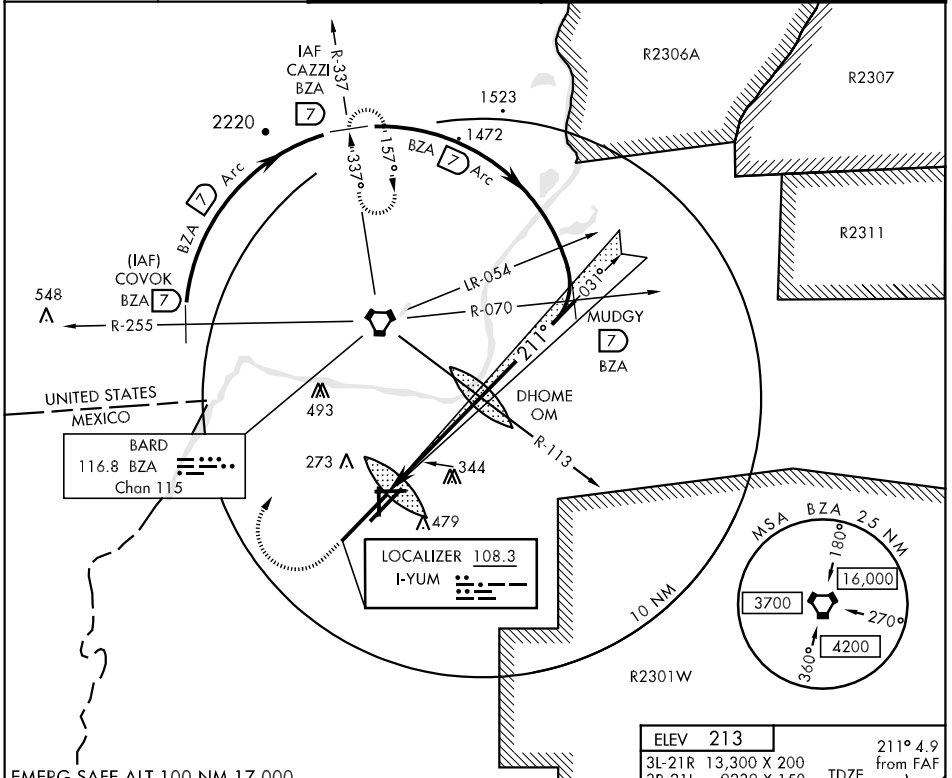
LOC I-YUM 108.3	APCH CRS 211°	Rwy Idg 13,300 TDZE 195 Arpt Elev 213
---------------------------	-------------------------	--

AL-511 [USN]

YUMA MCAS/YUMA INTL (KNYL)

<p>▽ * When ALS inop, increase vis (ILS) to ¾ mile; (LOC) CAT AB to 1 mile, CAT CD to 1 ½ mile.</p>	<p>MALSRL A5</p>	<p>MISSED APPROACH: Climb to 900, then climbing right turn to 3600 direct BZA VORTAC and BZA R-337 to CAZZI/BZA 7 DME and hold.</p>
--	-----------------------------	---

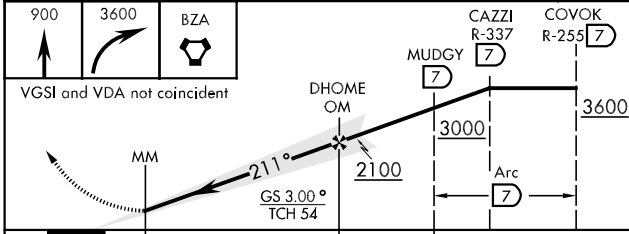
<p>ATIS ★ 118.8 273.2</p>	<p>YUMA APP CON 124.7 374.8</p>	<p>YUMA TOWER ★ 119.3 (CTAF) 0 382.8</p>	<p>GND CON 121.9 315.7</p>	<p>CLNC DEL 118.0 336.4</p>	<p>ASR/PAR</p>
--------------------------------------	--	---	---------------------------------------	--	----------------



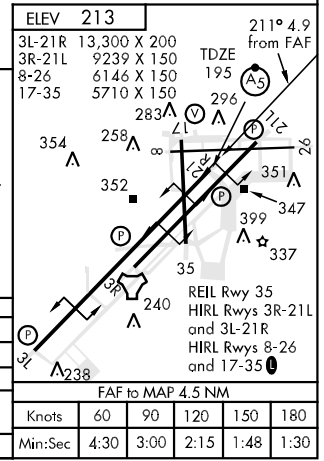
SW-4, 22 OCT 2009 to 19 NOV 2009

SW-4, 22 OCT 2009 to 19 NOV 2009

EMERG SAFE ALT 100 NM 17,000



CATEGORY	A	B	C	D
S-ILS 21R *	395-½		200 (200-½)	
S-LOC 21R *	600-½	405 (400-½)	600-¾	405 (400-¾)
CIRCLING	700-1	484 (500-1)	700-1½	780-2
S-PAR 21R	295-½ 100 (100-½)		GS 3.0°	



YUMA, ARIZONA
09295

32°39'N-114°36'W

YUMA MCAS/YUMA INTL (KNYL)

ILS or LOC RWY 21R