

VORTAC BZA <b>116.8</b> Chan <b>115</b>	APCH CRS <b>167°</b>	Rwy Idg TDZE <b>5710</b> <b>199</b> Arpt Elev <b>213</b>	JAL-511 [USN]	YUMA MCAS/YUMA INTL (KNYL)
---	-------------------------	---	---------------	----------------------------

**MISSED APPROACH:** Climbing right turn to 4000 direct BZA VORTAC, then fly R-337 to BRIDG and hold.

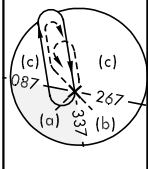
ATIS ★ <b>118.8 273.2</b>	YUMA APP CON <b>124.7 374.8</b>	YUMA TOWER ★ <b>119.3 (CTAF) 382.8</b>	GND CON <b>121.9 315.7</b>	CLNC DEL <b>118.0 336.4</b>	ASR/PAR
------------------------------	------------------------------------	---	-------------------------------	--------------------------------	---------

## EFFECTIVE BY NOTAM

Request holding from Los Angeles ARTCC prior to frequency change to MCAS Yuma Approach Control.

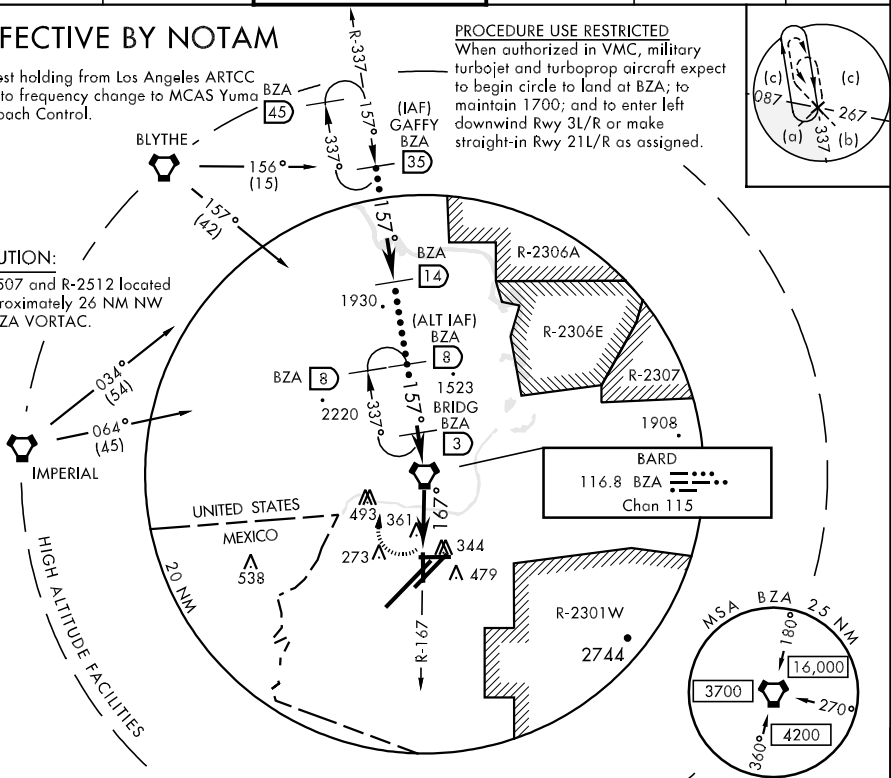
### PROCEDURE USE RESTRICTED

When authorized in VMC, military turbojet and turboprop aircraft expect to begin circle to land at BZA; to maintain 1700; and to enter left downwind Rwy 3L/R or make straight-in Rwy 21L/R as assigned.



### CAUTION:

R-2507 and R-2512 located approximately 26 NM NW of BZA VORTAC.



SW-4, 22 OCT 2009 to 19 NOV 2009

SW-4, 22 OCT 2009 to 19 NOV 2009

EMERG SAFE ALT 100 NM 17,000

GAFFY R-337 FL240 15,000 157° 5000 4000 2500 167° 6 NM WOGIX R-167 4000 BZA BRIDG BZA 3 ELEV 213 3L-21R 13,300 X 200 3R-21L 9239 X 150 8-26 6146 X 150 17-35 5710 X 150 167° 6.0 NM from VORTAC 283 296 354 258 TDZE 199 352 351 347 399 337 35 240 REIL Rwy 35 HIRL Rwy 3R-21L and 3L-21R HIRL Rwy 8-26 and 17-35	ALT IAF B 8 14 35 3 6		
	CATEGORY S-17 CIRCLING	C 680-1¼ 481 (500-1¼) 700-1½ 484 (500-1½)	D 680-1½ 481 (500-1½) 780-2 564 (600-2)