

YUMA, ARIZONA

HI-TACAN RWY 3L

TACAN NYL Chan 84	APCH CRS 035°	Rwy Idg 13,300 TDZE 198 Arpt Elev 213
-----------------------------	-------------------------	--

JAL-511 [USN]

YUMA MCAS/YUMA INTL (KNYL)

MISSED APPROACH: Climb to 4000 on NYL TACAN R-020, join and Arc N on the 10 mile Arc to PRSON and hold.

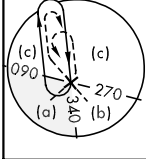
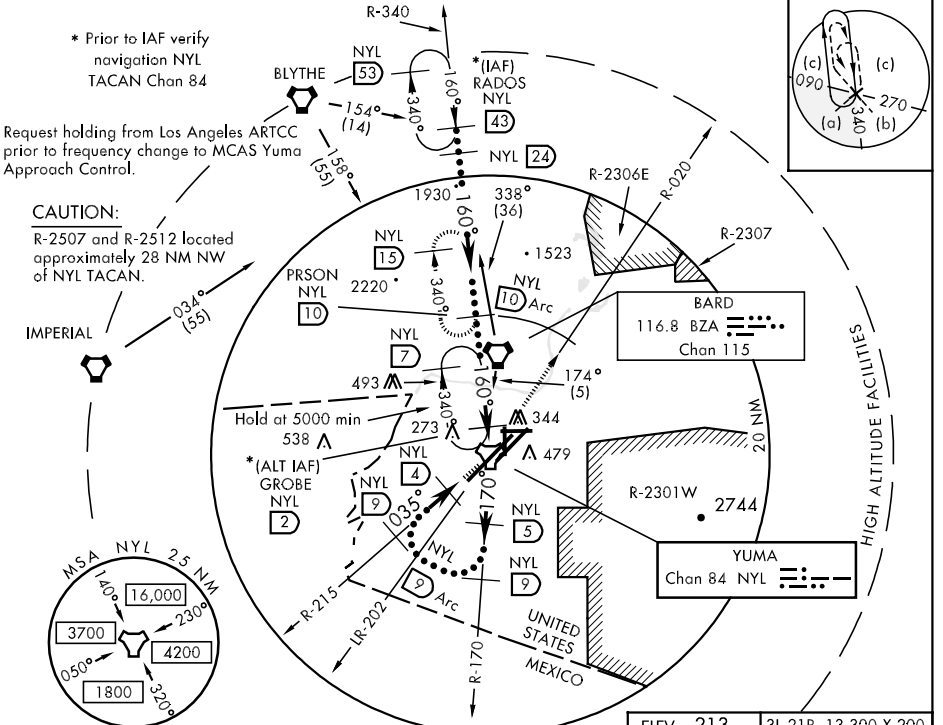
ATIS ★ 118.8 273.2	YUMA APP CON 124.7 374.8	YUMA TOWER ★ 119.3 (CTAF) 0 382.8	GND CON 121.9 315.7	CLNC DEL 118.0 336.4	ASR/PAR
------------------------------	------------------------------------	---	-------------------------------	--------------------------------	---------

* Prior to IAF verify navigation NYL TACAN Chan 84

Request holding from Los Angeles ARTCC prior to frequency change to MCAS Yuma Approach Control.

CAUTION:

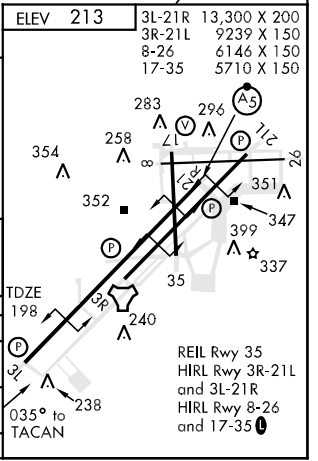
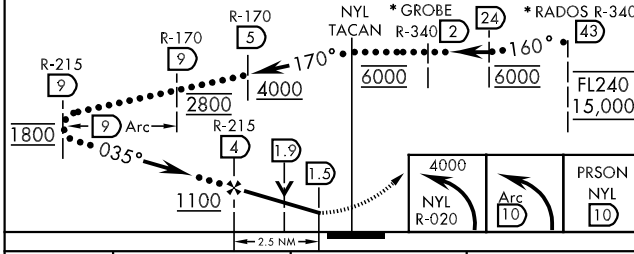
R-2507 and R-2512 located approximately 28 NM NW of NYL TACAN.



SW-4, 22 OCT 2009 to 19 NOV 2009

SW-4, 22 OCT 2009 to 19 NOV 2009

EMERG SAFE ALT 100 NM 17,000



CATEGORY	C	D	E
S-3L	342 540-1 (400-1)	540-1¼ 342 (400-1¼)	
CIRCLING	484 700-1½ (500-1½)	564 780-2 (600-2)	584 800-2 (600-2)
S-PAR 3L	298-½	100 (100-½)	GS 3.00°

YUMA, ARIZONA
09295

32°39'N-114°37'W

YUMA MCAS/YUMA INTL (KNYL)

HI-TACAN RWY 3L