

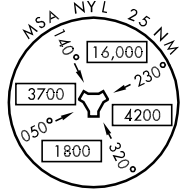
# GLAMIS-SIX DEPARTURE (GLAMS6•CARGO)

YUMA, ARIZONA

ATIS ★  
 118.8 273.2  
 CLNC DEL  
 118.0 336.4  
 GND CON  
 121.9 315.7  
 YUMA TOWER★  
 119.3 (CTAF) 382.8  
 YUMA DEP CON  
 125.55 281.0

SHL-511 [USN]

BLYTHE  
 117.4 BLH  
 Chan 121  
 L-4-5, H-4

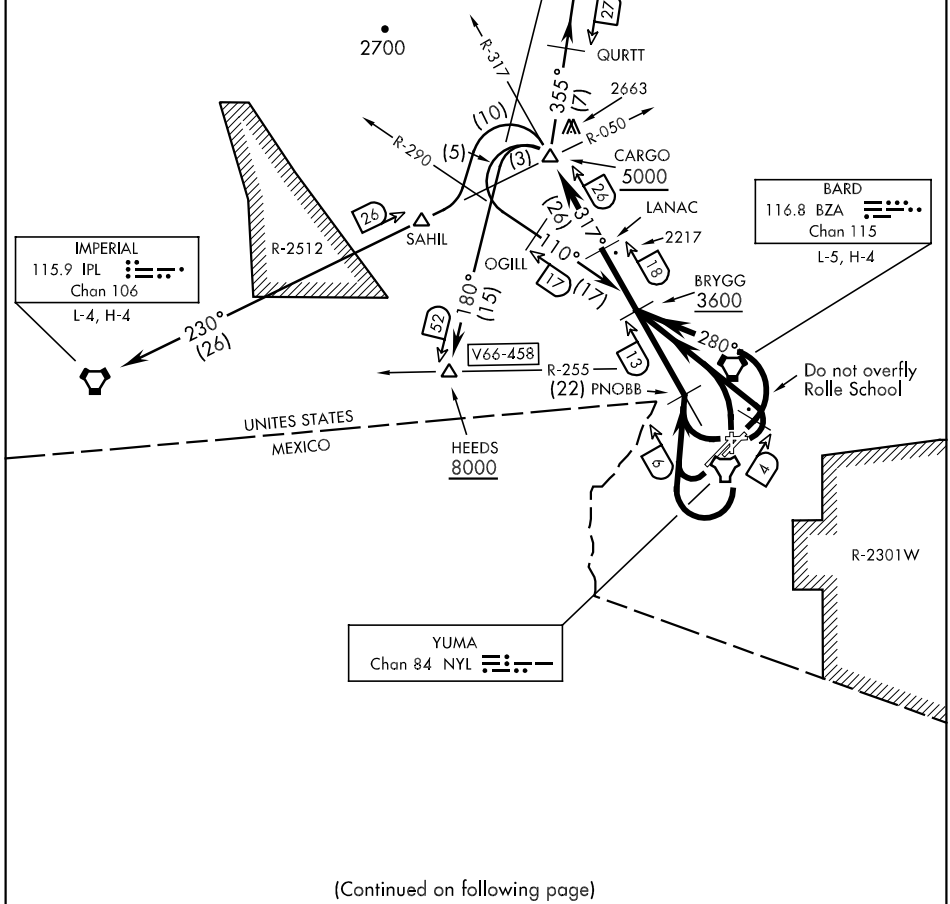


This departure will be filed/assigned for aircraft carrying external ordance. Prior to crossing BRYGG DME fix, flight path adjustments to avoid overflight of congested areas are authorized.

This departure will be filed/assigned for aircraft as a preferential departure route when radar services are available.

SW-4, 22 OCT 2009 to 19 NOV 2009

SW-4, 22 OCT 2009 to 19 NOV 2009



IMPERIAL  
 115.9 IPL  
 Chan 106  
 L-4, H-4

BARD  
 116.8 BZA  
 Chan 115  
 L-5, H-4

YUMA  
 Chan 84 NYL

(Continued on following page)

# GLAMIS-SIX DEPARTURE (GLAMS6•CARGO)

YUMA, ARIZONA

YUMA MCAS/YUMA INTL (KNYL)