

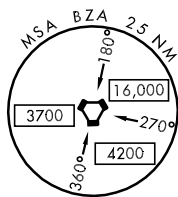
ARGUS-ONE DEPARTURE (ARGUS1•IPL)

YUMA MCAS/YUMA INTL (KNYL)

YUMA, ARIZONA

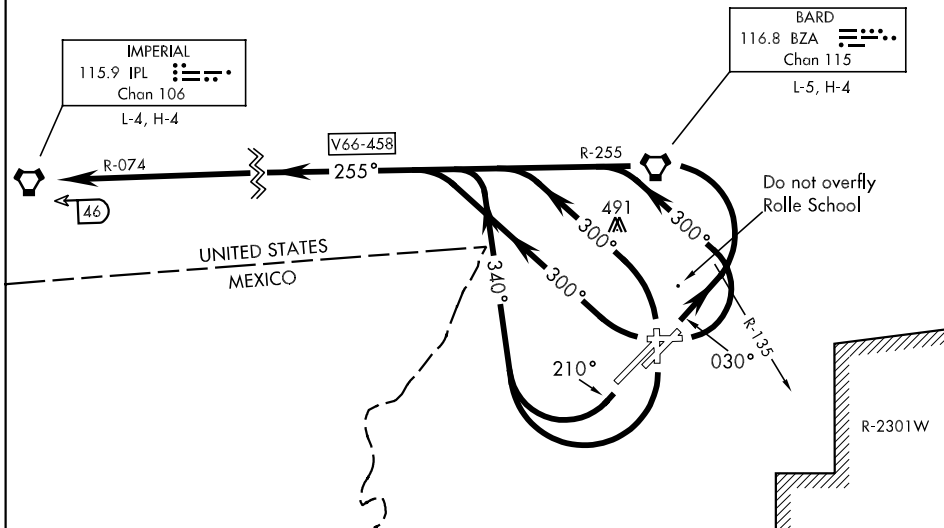
ATIS ★
 118.8 273.2
 CLNC DEL
 118.0 336.4
 GND CON
 121.9 315.7
 YUMA TOWER ★
 119.3 (CTAF) 382.8
 YUMA DEP CON
 125.55 281.0

SHL-511 [USN]



RADAR REQUIRED

2217



SW-4, 22 OCT 2009 to 19 NOV 2009

SW-4, 22 OCT 2009 to 19 NOV 2009

DEPARTURE ROUTE DESCRIPTION

- ALL RWY:** Cross the Departure End of Runway at or above 35' AGL.
- TAKE-OFF RWY 3L/R:** Fly heading 030° until passing BZA R-135, then turn left direct BZA VORTAC, then
- TAKE-OFF RWY 8:** Turn left heading 300° to join and.....
- TAKE-OFF RWY 17:** Turn right heading 340° to join and.....
- TAKE-OFF RWY 21L/R:** Fly heading 210° until passing southwest field boundary; then turn right heading 340° to join and.....
- TAKE-OFF RWY 26:** Turn right heading 300° to join and.....
- TAKEOFF RWY 35:** Turn left heading 300° to join and.....

Fly BZA R-255 and IPL R-074 to IPL VORTAC, then via assigned route. Maintain assigned altitude. Expect clearance to filed altitude/flight level 10 minutes after departure.

ARGUS-ONE DEPARTURE (ARGUS1•IPL)

YUMA, ARIZONA

YUMA MCAS/YUMA INTL (KNYL)