

TUSKEGEE, ALABAMA

AL-509 (FAA)

RNAV (GPS) RWY 31

TUSKEGEE/MOTON FIELD MUNI (06A)

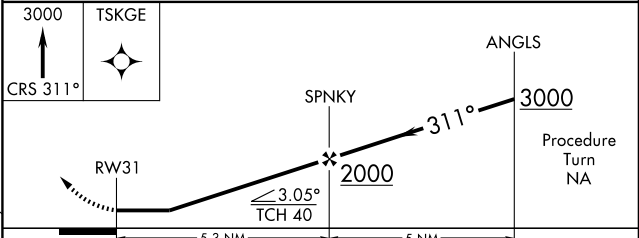
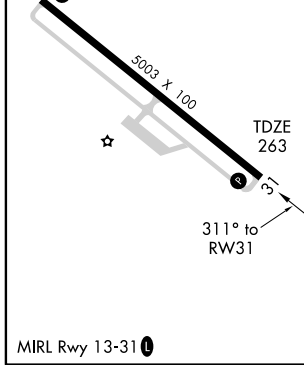
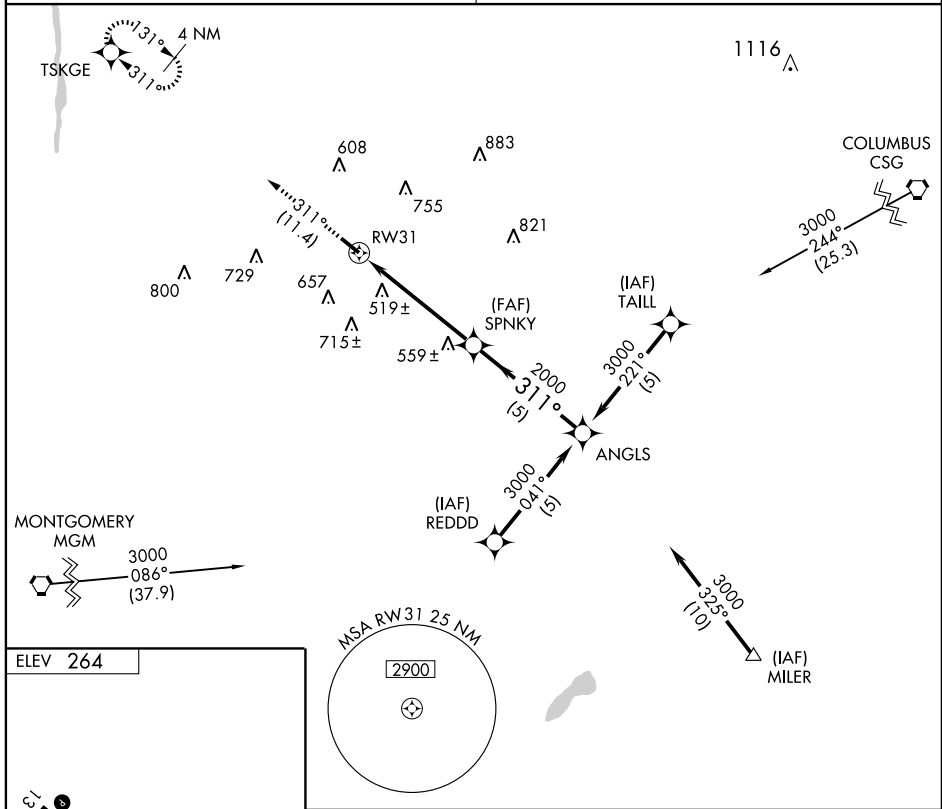
APP CRS	Rwy Idg	5003
311°	TDZE	263
	Apt Elev	264

NA Use Montgomery altimeter setting.
GPS or RNP-0.3 Required.
DME/DME RNP-0.3 NA

MISSED APPROACH: Climb to 3000 via 311° course to TSKGE WP and hold.

ATLANTA APP CON ★
125.5 323.1

UNICOM
122.8 (CTAF) 0



CATEGORY	A	B	C	D
LNAV MDA	880-1 617 (700-1)		880-1 ³ / ₄ 617 (700-1 ³ / ₄)	880-2 617 (700-2)
CIRCLING	960-1 696 (700-1)	1000-1 736 (800-1)	1000-2 736 (800-2)	1060-2 ¹ / ₂ 796 (800-2 ¹ / ₂)

TUSKEGEE, ALABAMA
Orig 09099

32° 28'N - 85° 41'W

RNAV (GPS) RWY 31

SE-4, 22 OCT 2009 to 19 NOV 2009

SE-4, 22 OCT 2009 to 19 NOV 2009