

VOR RWY 24

TULLAHOMA RGNL AIRPORT/WM NORTHERN FIELD (THA)

VOR UXM 109.65	APP CRS 232°	Rwy Idg 4999
		TDZE 1082
		Apt Elev 1083

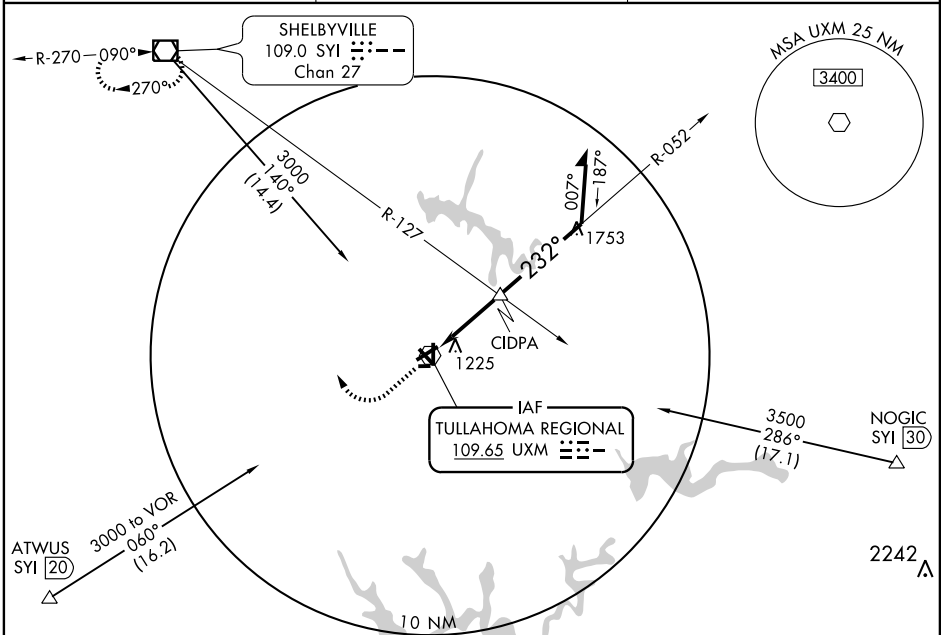
⚠ NA If local altimeter setting not received, use Nashville altimeter setting and increase all MDAs 200 feet. Straight-in minimums NA at night. Circling to Rwy 9-27 NA at night.

MISSED APPROACH: Climb to 2000 then climbing right turn to 3000 direct SYI VOR/DME and hold.

AWOS-3
128.325

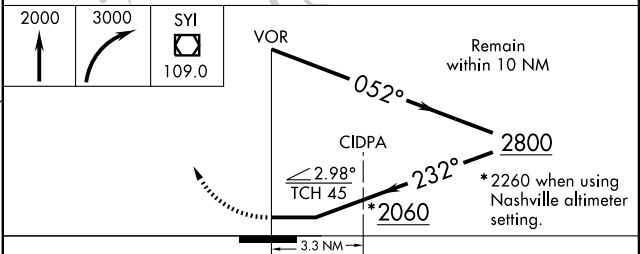
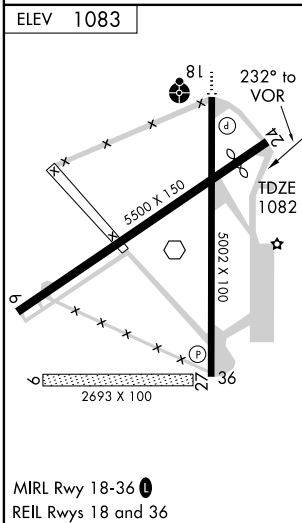
MEMPHIS CENTER
126.75 353.5

UNICOM
123.0 (CTAF) 0



SE-1, 22 OCT 2009 to 19 NOV 2009

SE-1, 22 OCT 2009 to 19 NOV 2009



CATEGORY	A	B	C	D
S-24	2060-1¼ 978 (1000-1¼)	2060-1½ 978 (1000-1½)	2060-3	978 (1000-3)
CIRCLING	2060-1¼ 977 (1000-1¼)	2060-1½ 977 (1000-1½)	2060-3	977 (1000-3)
CIDPA FIX MINIMUMS (DUAL VOR RECEIVERS REQUIRED)				
S-24	1500-1	418 (500-1)	1500-1¼	418 (500-1¼)
CIRCLING	1540-1	457 (500-1)	1540-1½ 457 (500-1½)	1640-2 557 (600-2)