

TULLAHOMA, TENNESSEE

AL-508 (FAA)

# RNAV (GPS) RWY 6

TULLAHOMA RGNL AIRPORT/WM NORTHERN FIELD (THA)

APP CRS <b>061°</b>	Rwy Idg <b>5500</b>
	TDZE <b>1082</b>
	Apt Elev <b>1083</b>

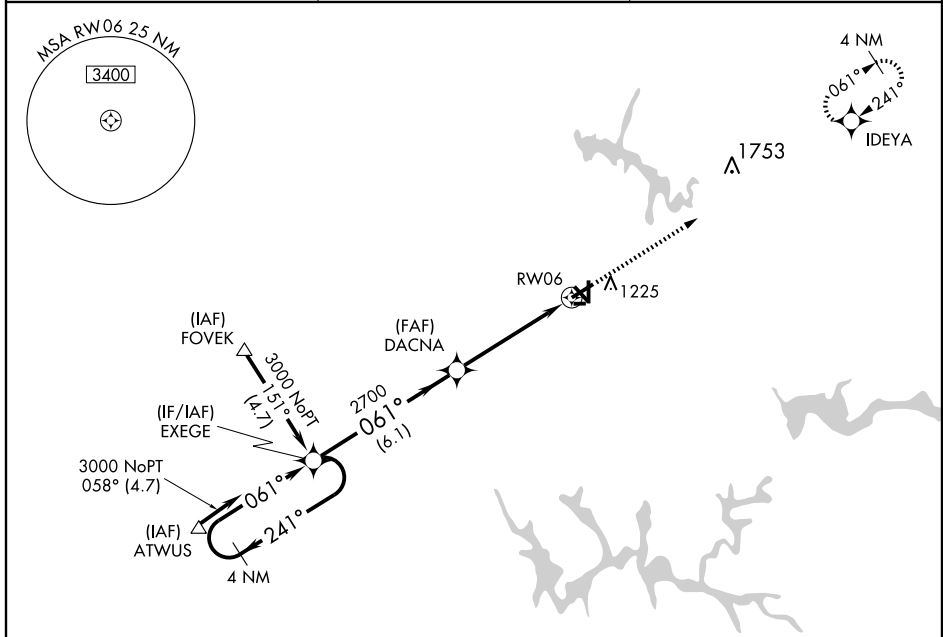
**NA** DME/DME RNP-0.3 NA. Straight-in minimums NA at night. Circling to Rwy 9-27 NA at night. If local altimeter setting not received, use Nashville altimeter setting and increase all MDAs 200 feet. VDP NA when using Nashville altimeter setting.

**MISSED APPROACH:** Climb to 3000 direct IDEYA and hold.

AWOS-3  
**128.325**

MEMPHIS CENTER  
**126.75 353.5**

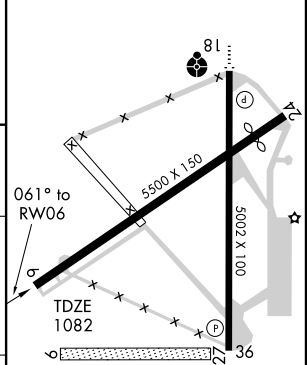
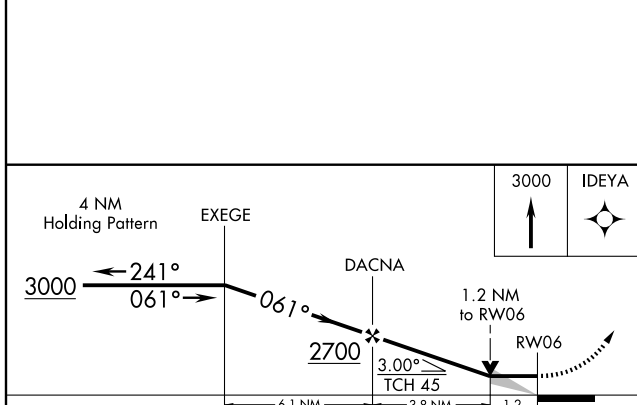
UNICOM  
**123.0 (CTAF)**



SE-1, 22 OCT 2009 to 19 NOV 2009

SE-1, 22 OCT 2009 to 19 NOV 2009

ELEV 1083



CATEGORY	A	B	C	D
RNAV MDA	1500-1	418 (500-1)	1500-1¼	418 (500-1¼)
CIRCLING	1540-1	457 (500-1)	1540-1½ 457 (500-1½)	1640-2 557 (600-2)

MIRL Rwy 18-36  
REIL Rwy 18 and 36

TULLAHOMA, TENNESSEE  
Orig-A 09295

TULLAHOMA RGNL AIRPORT/WM NORTHERN FIELD (THA)  
35° 23' N-86° 15' W

# RNAV (GPS) RWY 6