

TULLAHOMA, TENNESSEE

AL-508 (FAA)

# RNAV (GPS) RWY 36

TULLAHOMA RGNL AIRPORT/WM NORTHERN FIELD (THA)

|                        |                         |
|------------------------|-------------------------|
| APP CRS<br><b>003°</b> | Rwy Idg<br><b>5002</b>  |
|                        | TDZE<br><b>1082</b>     |
|                        | Apt Elev<br><b>1083</b> |

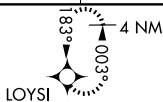
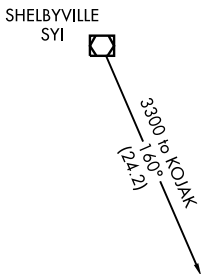
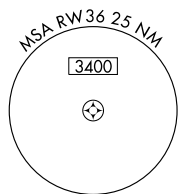
**⚠** DME/DME RNP-0.3 NA. If local altimeter setting not received, use Nashville altimeter setting and increase all MDAs 200 feet. Straight-in minus NA at night. Circling to Rwy 9-27 NA at night. VDP NA when using Nashville altimeter setting.

MISSED APPROACH: Climb to 3000 direct LOYSI and hold.

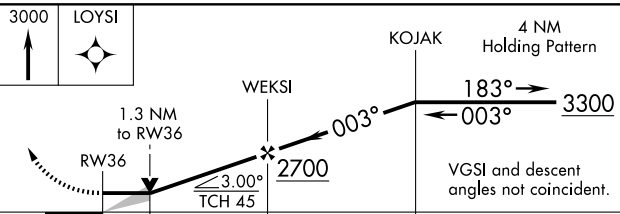
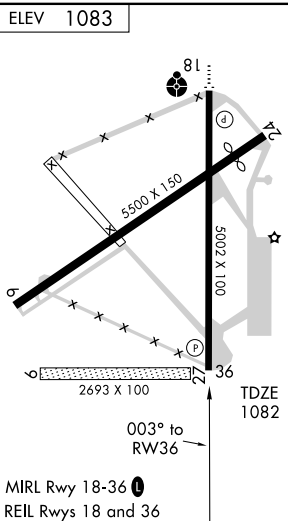
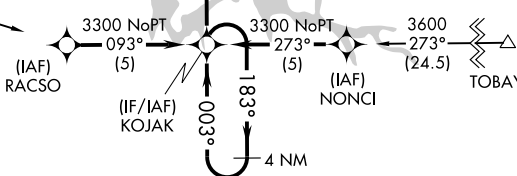
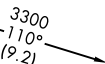
AWOS-3  
**128.325**

MEMPHIS CENTER  
**126.75 353.5**

UNICOM  
**123.0 (CTAF) 0**



ATWUS



| CATEGORY | A      | B           | C                       | D                     |
|----------|--------|-------------|-------------------------|-----------------------|
| LNAV MDA | 1480-1 |             | 398 (400-1)             |                       |
|          |        |             | 1480-1¼<br>398 (400-1¼) |                       |
| CIRCLING | 1540-1 | 457 (500-1) | 1540-1½<br>457 (500-1½) | 1640-2<br>557 (600-2) |

TULLAHOMA, TENNESSEE  
Orig 09295

TULLAHOMA RGNL AIRPORT/WM NORTHERN FIELD (THA)  
35° 23'N-86° 15'W

# RNAV (GPS) RWY 36

SE-1, 22 OCT 2009 to 19 NOV 2009

SE-1, 22 OCT 2009 to 19 NOV 2009