

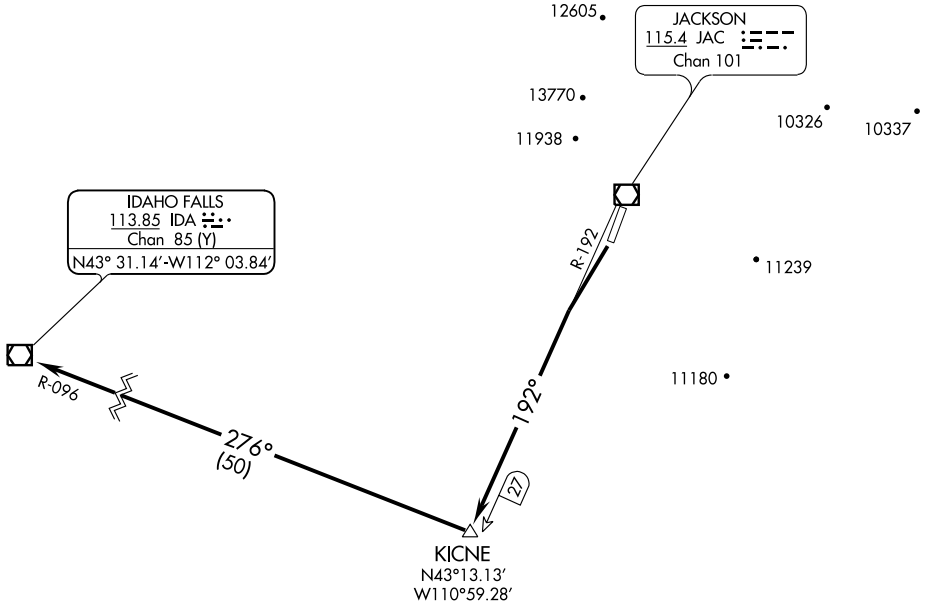
(TETON3.KICNE) 08157

SL-504 (FAA)

JACKSON HOLE (JAC)
JACKSON, WYOMING

TETON THREE DEPARTURE (OBSTACLE)

SALT LAKE CENTER
133.25 285.6
CASPER RADIO
122.05
CTAF
118.075
UNICOM
122.95
AWOS-3 120.625



NW-1, 22 OCT 2009 to 19 NOV 2009

NW-1, 22 OCT 2009 to 19 NOV 2009

TAKE-OFF MINIMUMS:

Rwy 19: Standard with minimum climb of 335' per NM to 14000 or 4400-3 for climb in visual conditions.

Rwy 1: Not authorized - ATC.

NOTE: Rwy 19, Bush 485 feet from departure end of runway, 513 feet right of centerline, 6428' MSL.



DEPARTURE ROUTE DESCRIPTION

TAKE-OFF RUNWAY 19: Climb to 14000 via JAC R-192 to KICNE INT/JAC 27 DME, then right turn via IDA R-096 to IDA VOR/DME; or for climb in visual conditions: cross JAC VOR/DME southbound at or above 10800, then climb to 14000 via JAC R-192 to KICNE INT/JAC 27 DME, then right turn via IDA R-096 to IDA VOR/DME.

TETON THREE DEPARTURE (OBSTACLE)

(TETON3.KICNE) 08157

JACKSON, WYOMING
JACKSON HOLE (JAC)