

RNAV (GPS) RWY 13

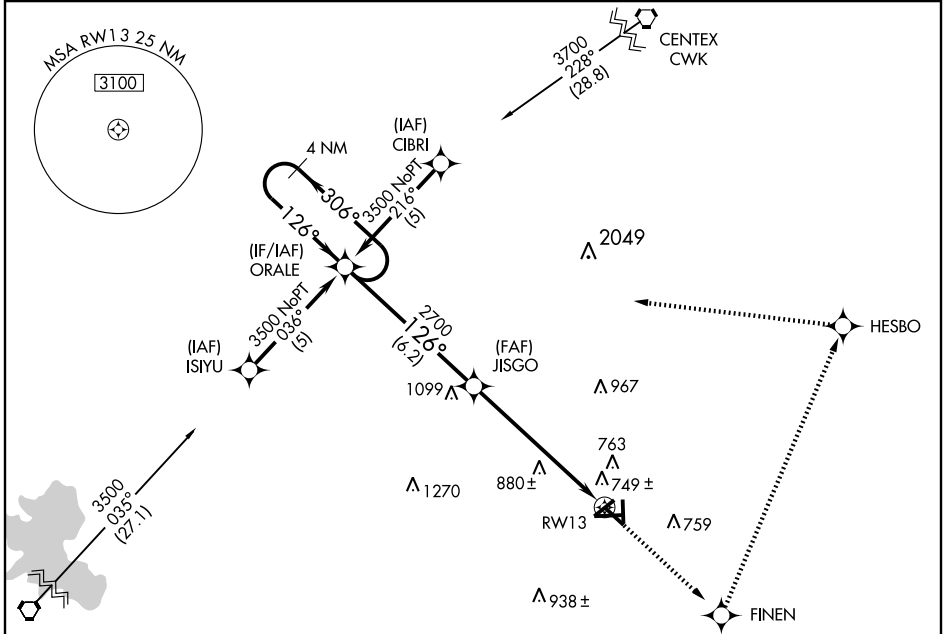
SAN MARCOS MUNI (HYI)

APP CRS 126°	Rwy Idg 5603
	TDZE 593
	Apt Elev 597

▽ GPS or RNP-0.3 Required. DME/DME RNP-0.3 NA. BARO-VNAV NA below -16°C (4°F).
▲ NA For inoperative MALSR, increase LNAV/VNAV and LNAV Cat E visibility 1/2 mile.
W Circling Cat E not authorized southwest of Rwy 13-31.

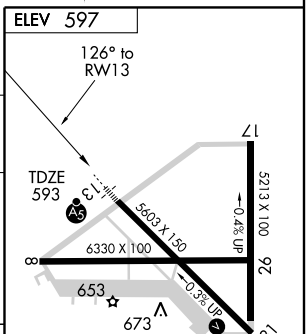
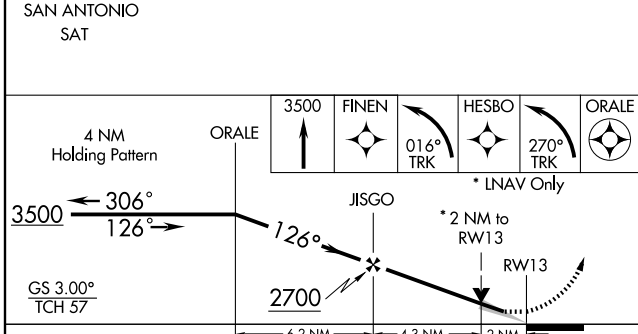
MALSR MISSED APPROACH: Climb to 3500 direct FINEN WP and left turn via 016° track to HESBO and left turn via 270° track to ORALE and hold.

AWOS-3 120.825	AUSTIN APP CON 119.0 370.85	CINC DEL 121.35	UNICOM 123.05 (CTAF) 0
--------------------------	---------------------------------------	---------------------------	----------------------------------



SC-3, 22 OCT 2009 to 19 NOV 2009

SC-3, 22 OCT 2009 to 19 NOV 2009



CATEGORY	A	B	C	D	E
LPV DA	NA				
LNAV/VNAV DA	1060-1		467 (500-1)		1060-1¼ 467 (500-1¼)
LNAV MDA	1280-½ 687 (700-½)		1280-1½ 687 (700-1½)	1280-1¾ 687 (700-1¾)	1280-2 687 (700-2)
CIRCLING	1280-1½ 683 (700-1½)		1280-2 683 (700-2)	1280-2¼ 683 (700-2¼)	1280-2 ½ 683 (700-2½)

REIL Rwy 8 and 26 0
 MIRL Rwy 8-26, 13-31, and 17-35 0