

# ILS or LOC RWY 13

SAN MARCOS MUNI (HYI)

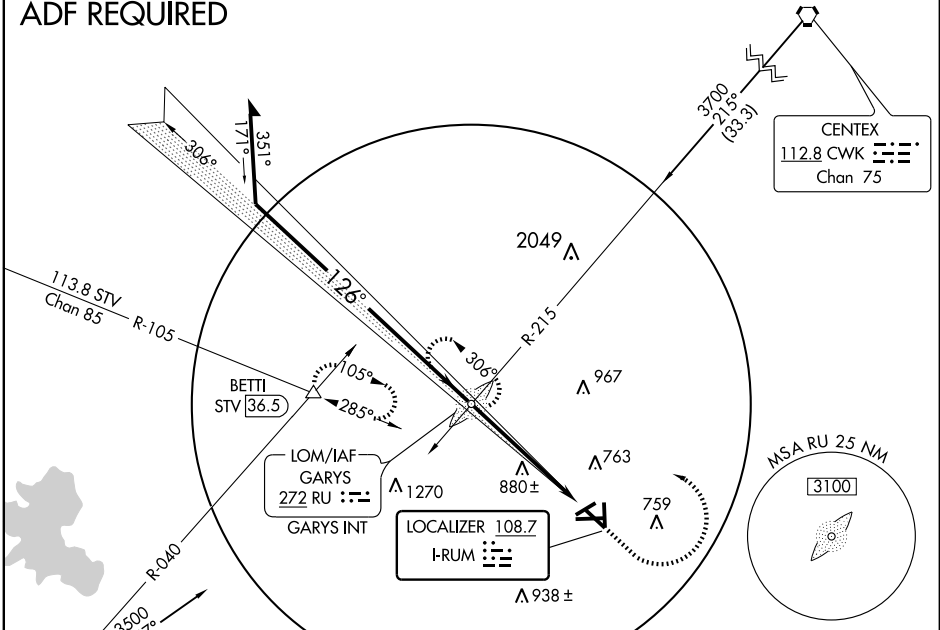
LOC I-RUM <b>108.7</b>	APP CRS <b>126°</b>	Rwy Idg <b>5603</b>
		TDZE <b>593</b>
		Apt Elev <b>597</b>

**NA** Circling Cat E not authorized southwest of Rwy 13-31.  
For inoperative MALSR, increase S-ILS 13 Cat E visibility ¼ mile, and S-LOC 13 Cat E ½ mile

**MALS** MISSED APPROACH: Climb to 2000 then climbing left turn to 3200 direct GARYS LOM and hold.

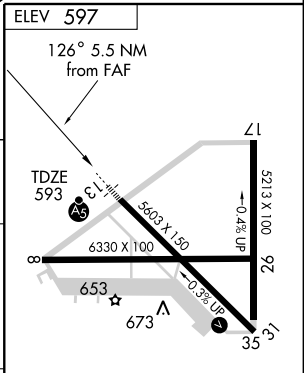
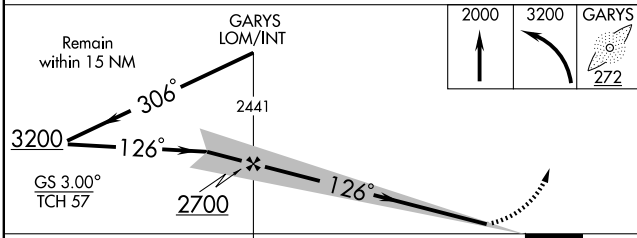
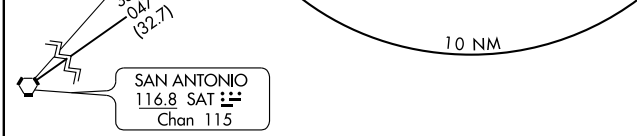
AWOS-3 <b>120.825</b>	AUSTIN APP CON <b>119.0 370.85</b>	CLNC DEL <b>121.35</b>	UNICOM <b>123.05 (CTAF) 0</b>
--------------------------	---------------------------------------	---------------------------	----------------------------------

## ADF REQUIRED



SC-3, 22 OCT 2009 to 19 NOV 2009

SC-3, 22 OCT 2009 to 19 NOV 2009



CATEGORY	A	B	C	D	E
S-ILS-13	793-½ 200 (200-½)				
S-LOC-13	1260-½ 667 (700-½)	1260-1¼ 667 (700-1¼)	1260-1½ 667 (700-1½)	1260-2 667 (700-2)	
CIRCLING	1260-1 663 (700-1)	1260-1¾ 663 (700-1¾)	1260-2 663 (700-2)	1280-2½ 683 (700-2½)	

REIL Rwy 8 and 26 0  
MIRL Rwy 8-26, 13-31, and 17-35 0

FAF to MAP 5.5 NM

Knots	60	90	120	150	180
Min:Sec	5:30	3:40	2:45	2:12	1:50