

RNAV (GPS) RWY 35

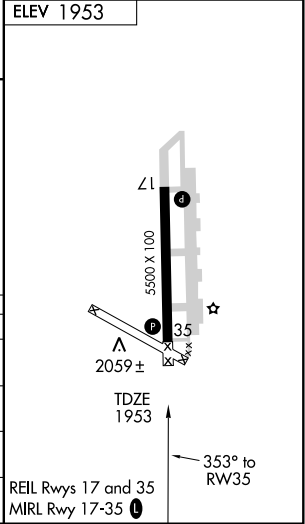
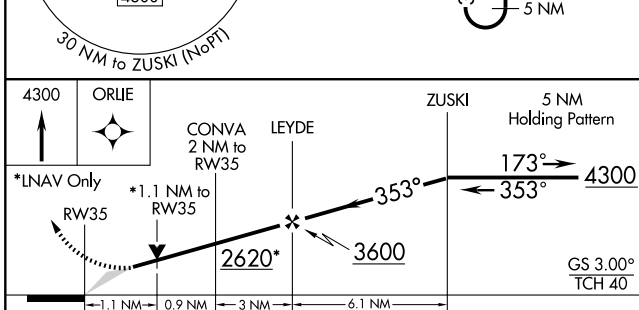
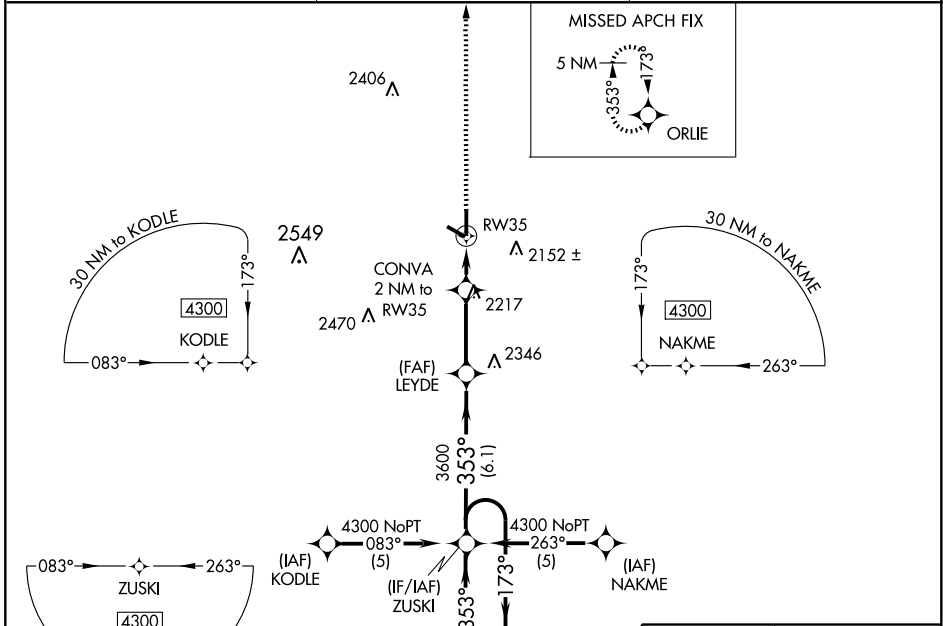
PRATT INDUSTRIAL (P'I'T')

WAAS CH 86607 W35A	APP CRS 353°	Rwy Idg TDZE Apt Elev	5500 1953 1953
---------------------------------	------------------------	-----------------------------	---

▲ For uncompensated Baro-VNAV systems, LNAV/VNAV NA below -18°C (0°F) or above 54°C (130°F). DME/DME RNP-0.3 NA. When local altimeter setting not received use Great Bend altimeter setting and increase all DA/MDA 100 feet and LPV visibility ¼ mile all Cats, LNAV/VNAV visibility ½ mile all Cats and LNAV Cat C visibility ¼ mile. Baro-VNAV and VDP NA when using Great Bend altimeter setting.

MISSED APPROACH:
Climb to 4300 direct ORLIE and hold.

AWOS-3 118.725	WICHITA RADIO 122.65	UNICOM 122.8 (CTAF) ①
--------------------------	--------------------------------	--



CATEGORY	A	B	C	D
LPV DA	2203-1	250 (300-1)		NA
LNAV/VNAV DA	2329-1¼	376 (400-1¼)		NA
LNAV MDA	2320-1	367 (400-1)		NA
CIRCLING	2380-1 427 (500-1)	2420-1 467 (500-1)	2420-1½ 467 (500-1½)	NA

NC-2, 22 OCT 2009 to 19 NOV 2009

NC-2, 22 OCT 2009 to 19 NOV 2009