

PRATT, KANSAS

AL-501 (FAA)

RNAV (GPS) RWY 17

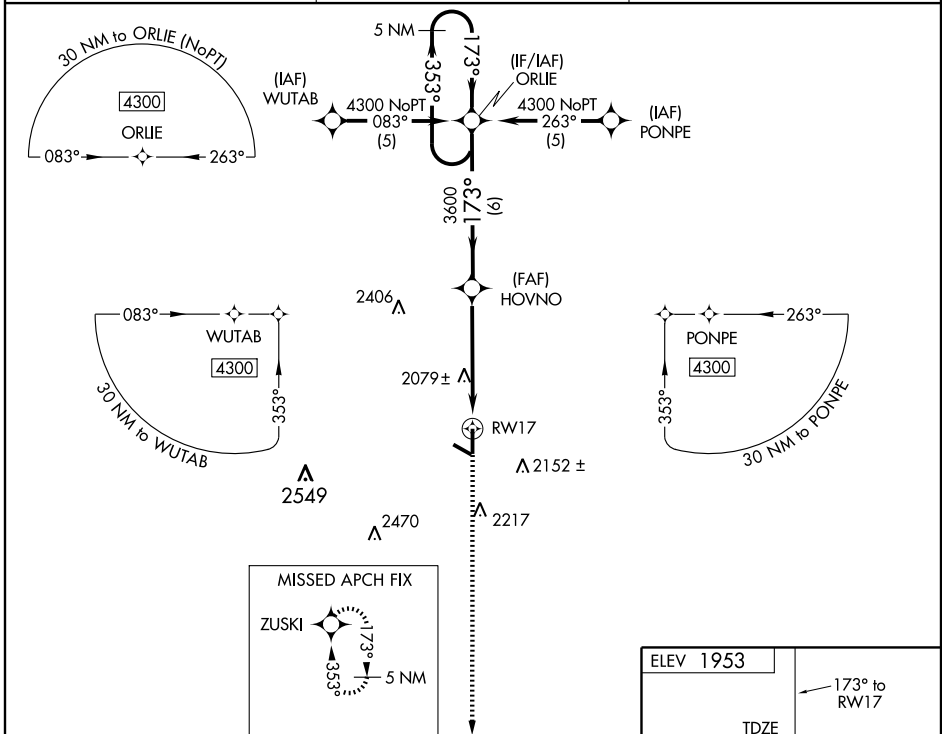
PRATT INDUSTRIAL (PTI)

WAAS CH 99607 W17A	APP CRS 173°	Rwy Idg TDZE Apt Elev	5500 1953 1953
--	------------------------	-----------------------------	---

⚠ For uncompensated Baro-VNAV systems, LNAV/VNAV NA below -18°C (0°F) or above 54°C (130°F).
 DME/DME RNP-0.3 NA. When local altimeter setting not received use Great Bend altimeter setting and increase all DA/MDA 100 feet and LPV visibility ¼ mile all Cats, LNAV/VNAV visibility ½ mile all Cats and LNAV Cat C ¼ mile. Baro-VNAV and VDP NA when using Great Bend altimeter setting.

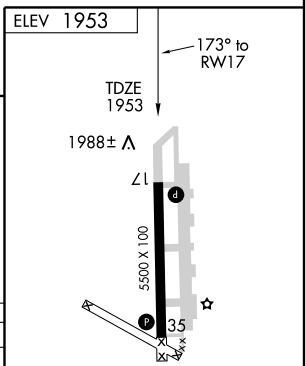
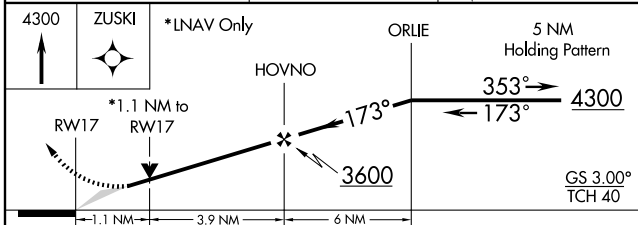
MISSED APPROACH: Climb to 4300 direct ZUSKI and hold.

AWOS-3 118.725	WICHITA RADIO 122.65	UNICOM 122.8 (CTAF) ①
--------------------------	--------------------------------	--



NC-2, 22 OCT 2009 to 19 NOV 2009

NC-2, 22 OCT 2009 to 19 NOV 2009



CATEGORY	A	B	C	D
LPV DA		2203-1 250 (300-1)		NA
LNAV/VNAV DA		2258-1 305 (400-1)		NA
LNAV MDA		2340-1 387 (400-1)		NA
CIRCLING	2380-1 427 (500-1)	2420-1 467 (500-1)	2420-1½ 467 (500-1½)	NA

REIL Rwy 17 and 35
 MRL Rwy 17-35 **①**

PRATT, KANSAS
 Amdt 1 08213

37°42'N-98°45'W

RNAV (GPS) RWY 17