

PRATT, KANSAS

AL-501 (FAA)

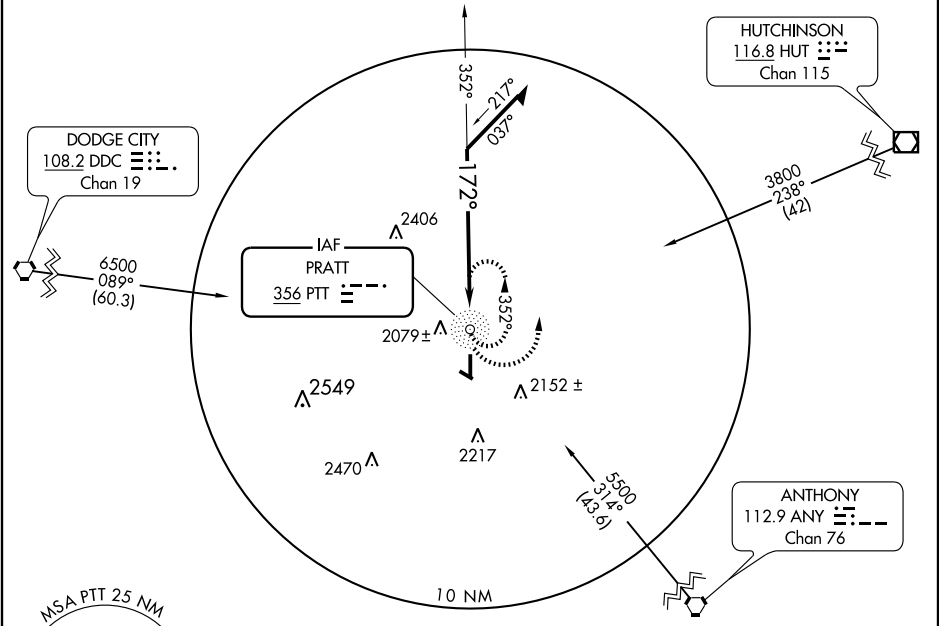
NDB RWY 17

PRATT INDUSTRIAL (P'TT)

NDB PTT 356	APP CRS 172°	Rwy Idg TDZE Apt Elev	5500 1952 1952
-----------------------	------------------------	-----------------------------	---

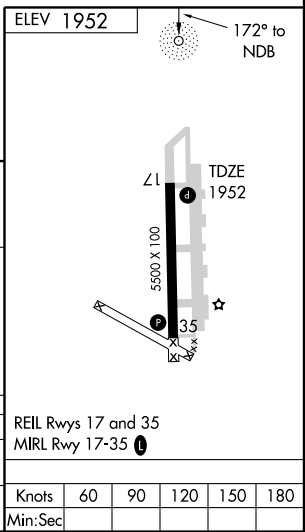
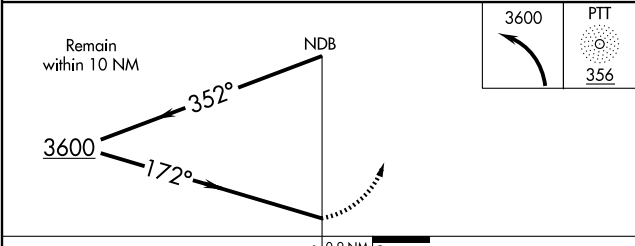
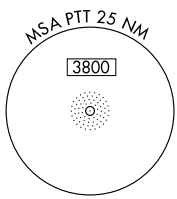
MISSED APPROACH: Climbing left turn to 3600 in PTT NDB holding pattern.

AWOS-3 118.725	WICHITA RADIO 122.65	UNICOM 122.8 (CTAF) 1
--------------------------	--------------------------------	--



NC-2, 22 OCT 2009 to 19 NOV 2009

NC-2, 22 OCT 2009 to 19 NOV 2009



CATEGORY	A	B	C	D
S-17	2440-1¼ 488 (500-1¼)			NA
CIRCLING	2440-1¼ 488 (500-1¼)		2440-1½ 488 (500-1½)	NA

REIL Rwy 17 and 35
MIRL Rwy 17-35 **1**

Knots	60	90	120	150	180
Min:Sec					

PRATT, KANSAS
Amdt 5 08213

37°42'N-98°45'W

PRATT INDUSTRIAL (P'TT) NDB RWY 17