

EDWARDS, CALIFORNIA

VOR/DME or TACAN RWY 22R

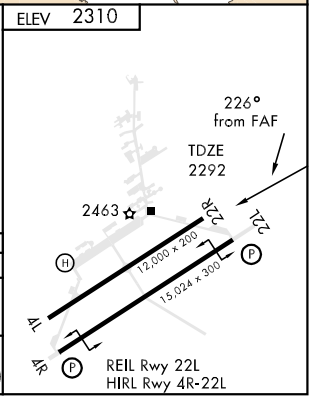
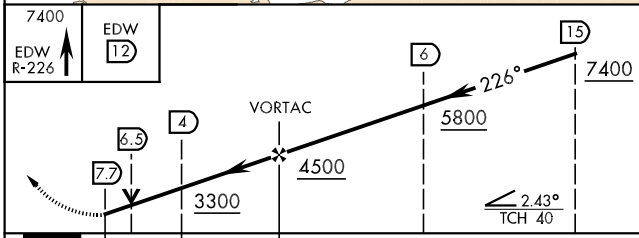
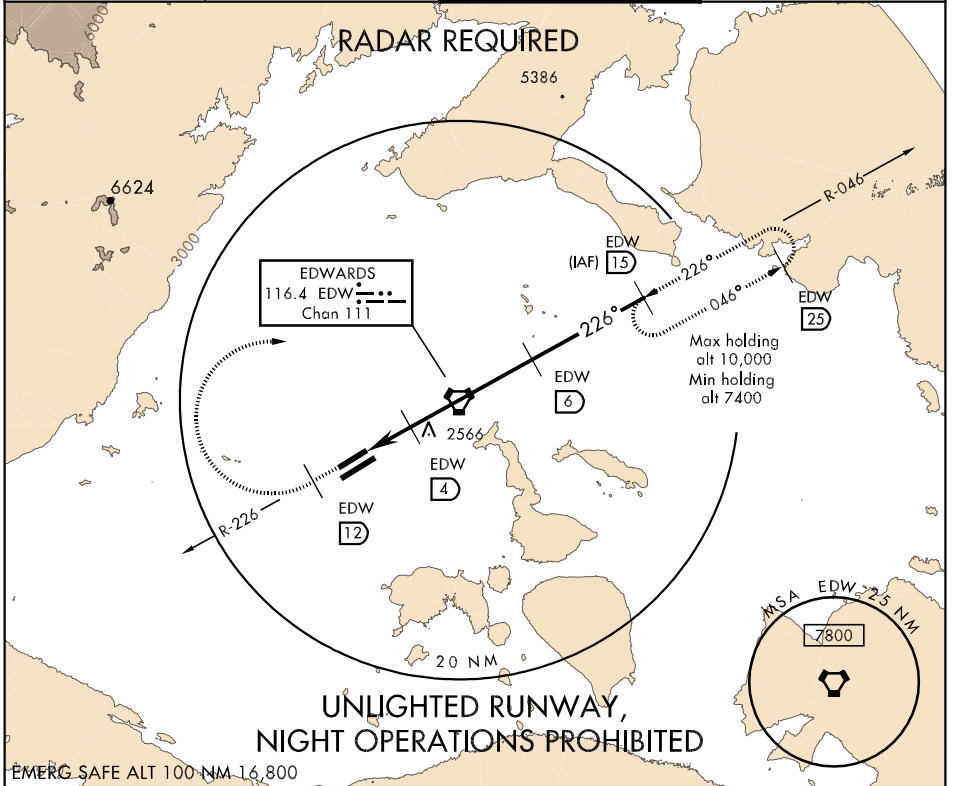
VORTAC EDW 116.4 Chan 111	APCH CRS 226°	Rwy Idg 12,000 TDZE 2292 Arpt Elev 2310
---	-------------------------	--

AL-500 [USAF]

EDWARDS AFB (KEDW)

⚠ * Circling not authorized NW of Rwy 4L-22R. Circling NA at night to Rwy 4L. MISSED APPROACH: Track EDW VORTAC R-226 outbound. At EDW 12 DME turn right direct EDW R-046/15 DME and hold. Maintain 7400.

ATIS ★ 269.9	SPORT APP CON 132.75 343.7	EDWARDS TOWER ★ 120.7 318.1	GND CON 121.8 225.4
------------------------	--------------------------------------	---------------------------------------	-------------------------------



CATEGORY	A	B	C	D	E
S-22R	2740-1 448 (500-1)		2740-1¼ 448 (500-1¼)	2740-1½ 448 (500-1½)	
CIRCLING *	2880-1 578 (600-1)		2880-1½ 578(600-1½)	2900-2 598 (600-2)	3000-2½ 698(700-2½)

EDWARDS, CALIFORNIA
Orig 09239

34°54'N-117°53'W

EDWARDS AFB (KEDW)

VOR/DME or TACAN RWY 22R

SW-3, 22 OCT 2009 to 19 NOV 2009

SW-3, 22 OCT 2009 to 19 NOV 2009