

EDWARDS, CALIFORNIA

HI-ILS RWY 22L

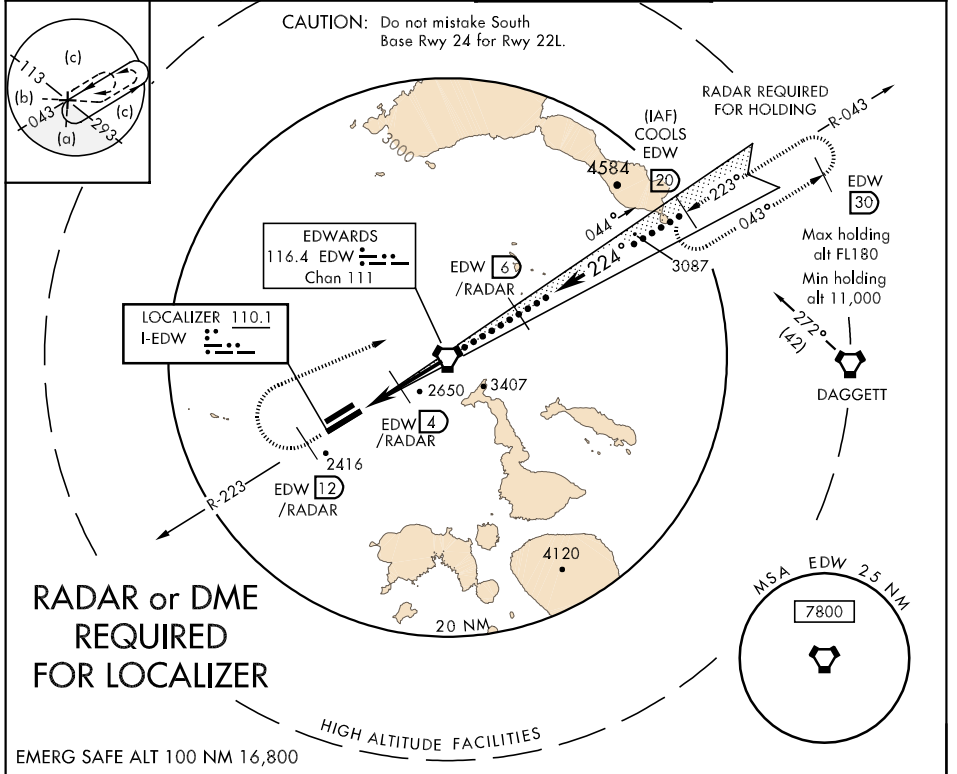
LOC I-EDW 110.1	APCH CRS 224°	Rwy Idg TDZE 15,024 2285 Arpt Elev 2310
---------------------------	-------------------------	---

JAL-500 [USAF]

EDWARDS AFB (KEDW)

▼ * Circling not authorized NW of Rwy 4R-22L. MISSED APPROACH: Track EDW VORTAC R-223 outbound. At 12 DME turn right direct EDW R-043/20 DME (COOLS) and hold. Maintain 11,000.

ATIS ★ 269.9	SPORT APP CON 132.75 343.7	EDWARDS TOWER ★ 120.7 318.1	GND CON 121.8 225.4
------------------------	--------------------------------------	---------------------------------------	-------------------------------



SW-3, 22 OCT 2009 to 19 NOV 2009

SW-3, 22 OCT 2009 to 19 NOV 2009

11,000 EDW R-223 EDW 12 COOLS EDW 20 VORTAC 4394 COOLS R-043 20 FL180 11,000 GS 2.50° TCH 51 VGS1 and vert descent angle not coincident.	EMERG SAFE ALT 100 NM 16,800 HIGH ALTITUDE FACILITIES			ELEV 2310
	0.5 3 NM 4 NM	7 /RADAR 4 /RADAR	6 /RADAR 20 /RADAR	224° 7.5 NM from FAF 2463 228 22L 12,000 x 200 15,024 x 300 TDZE 2285 2379
CATEGORY	C	D	E	
S-ILS 22L	2485- $\frac{3}{4}$	200	(200- $\frac{3}{4}$)	
S-LOC 22L	2540-1	255	(300-1)	
CIRCLING *	2880-1 $\frac{1}{2}$ 578 (600-1 $\frac{1}{2}$)	2880-2 578 (600-2)	3000-2 $\frac{1}{2}$ 698 (700-2 $\frac{1}{2}$)	

EDWARDS, CALIFORNIA
Orig 09295

34°54'N-117°53'W

EDWARDS AFB (KEDW)

HI-ILS RWY 22L