

# RNAV (GPS) RWY 22

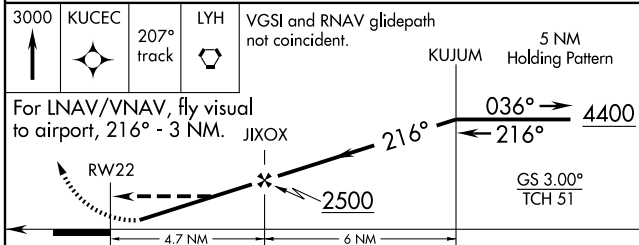
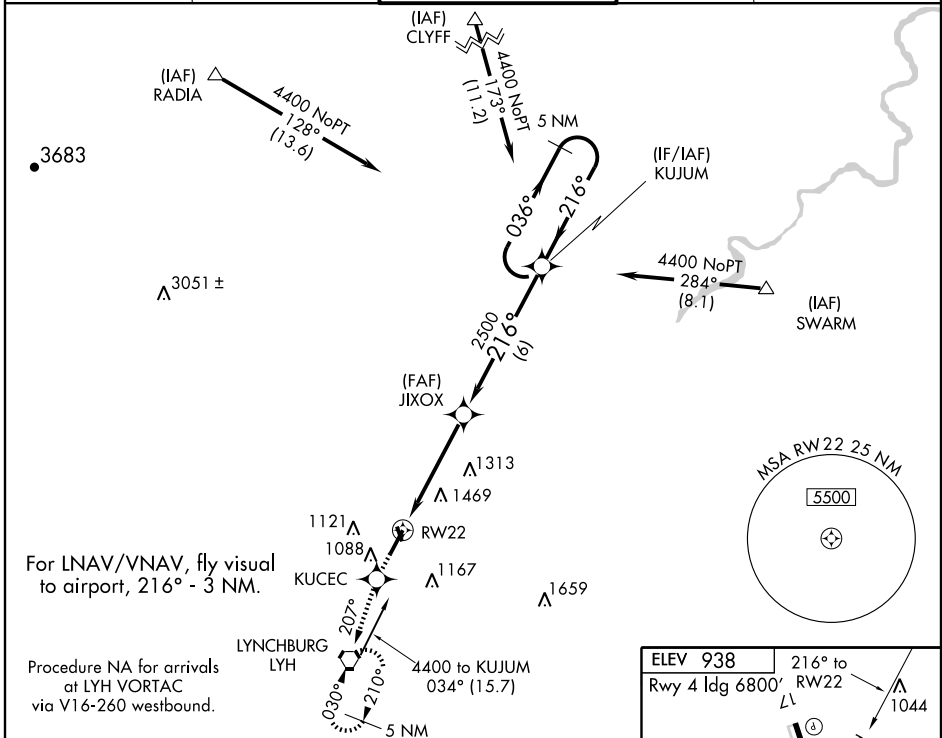
LYNCHBURG RGNL/PRESTON GLENN FIELD (LYH)

WAAS CH <b>97705</b> <b>W22A</b>	APP CRS <b>216°</b>	Rwy Idg <b>7100</b> TDZE <b>938</b> Apt Elev <b>938</b>
--	------------------------	---

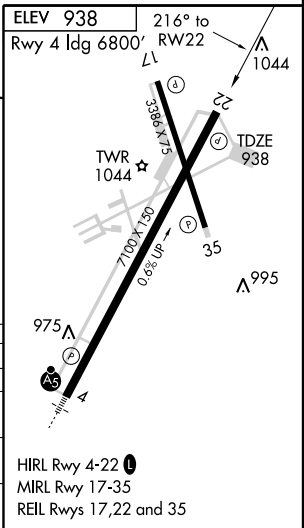
**⚠** For uncompensated Baro-VNAV systems, LNAV/VNAV NA below -16°C (4°F) or above 47°C (116°F). DME/DME RNP-0.3 NA. Visibility reduction by helicopters NA.

**MISSED APPROACH:** Climb to 3000 direct KUCEC and via 207° track to LYH VORTAC and hold, continue climb-in hold to 3000.

ATIS <b>119.8</b>	ROANOKE APP CON <b>135.0 254.32</b>	LYNCHBURG TOWER ★ <b>127.65 (CTAF) 0 257.8</b>	GND CON <b>121.9</b>	UNICOM <b>122.95</b>
----------------------	--	---	-------------------------	-------------------------



CATEGORY	A	B	C	D
LPV DA	1250-1 312 (400-1)			
LNAV/VNAV DA	1939-2 1001 (1100-2)	1939-3 1001 (1100-3)		
LNAV MDA	1720-1 782 (800-1)	1720-1 ¼ 782 (800-1 ¼)	1720-2 ¼ 782 (800-2 ¼)	1720-2 ½ 782 (800-2 ½)
CIRCLING	1720-1 782 (800-1)	1720-1 ¼ 782 (800-1 ¼)	1800-2 ½ 862 (900-2 ½)	1800-2 ¾ 862 (900-2 ¾)



NE-3, 22 OCT 2009 to 19 NOV 2009

NE-3, 22 OCT 2009 to 19 NOV 2009

# RNAV (GPS) RWY 22