


ILS or LOC RWY 4

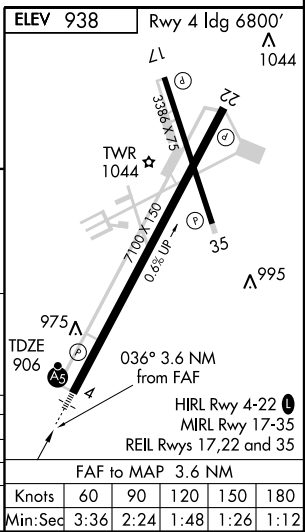
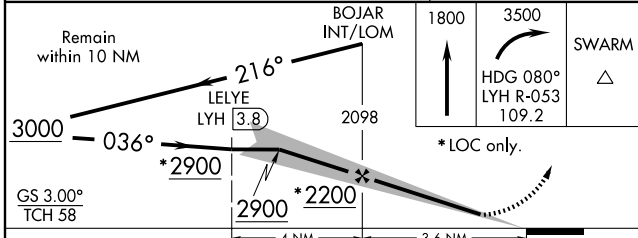
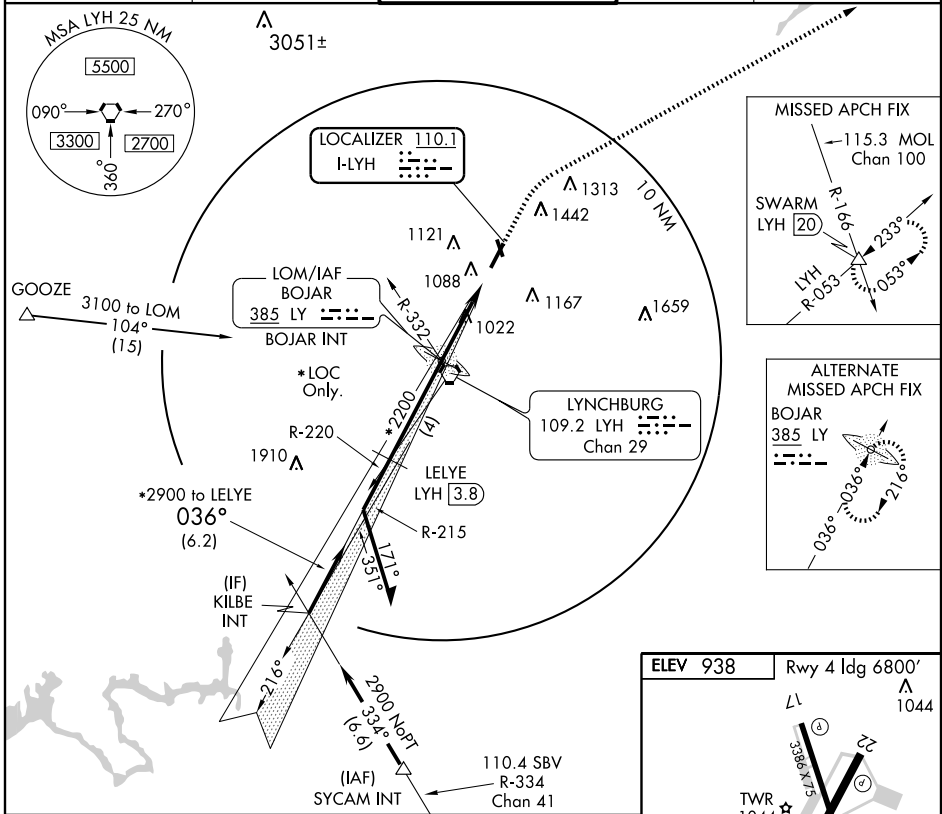
LYNCHBURG RGNL/PRESTON GLENN FIELD (LYH)

LOC I-LYH 110.1	APP CRS 036°	Rwy Idg 6800 TDZE 906 Apt Elev 938
---------------------------	------------------------	--

▽ * DME REQUIRED
▲ ** RVR 1800 authorized with the use of FD or AP or HUD to DA.

MALSR

MISSED APPROACH: Climb to 1800, then climbing right turn to 3500 via heading 080° and LYH VORTAC R-053 to SWARM Int and hold.

ATIS 119.8	ROANOKE APP CON 135.0 254.32	LYNCHBURG TOWER ★ 127.65 (CTAF) 0 257.8	GND CON 121.9	UNICOM 122.95
----------------------	--	---	-------------------------	-------------------------



CATEGORY	A	B	C	D
S-ILS 4	** 1106/24 200 (200-½)			
S-LOC 4	1320/24	414 (400-½)	1320/40	414 (400-¾)
CIRCLING	1640-1 702 (800-1)	1700-1¼ 762 (800-1¼)	1800-2½ 862 (900-2½)	1800-2¾ 862 (900-2¾)

ILS or LOC RWY 4

NE-3, 22 OCT 2009 to 19 NOV 2009

NE-3, 22 OCT 2009 to 19 NOV 2009