

# VOR/DME RWY 17

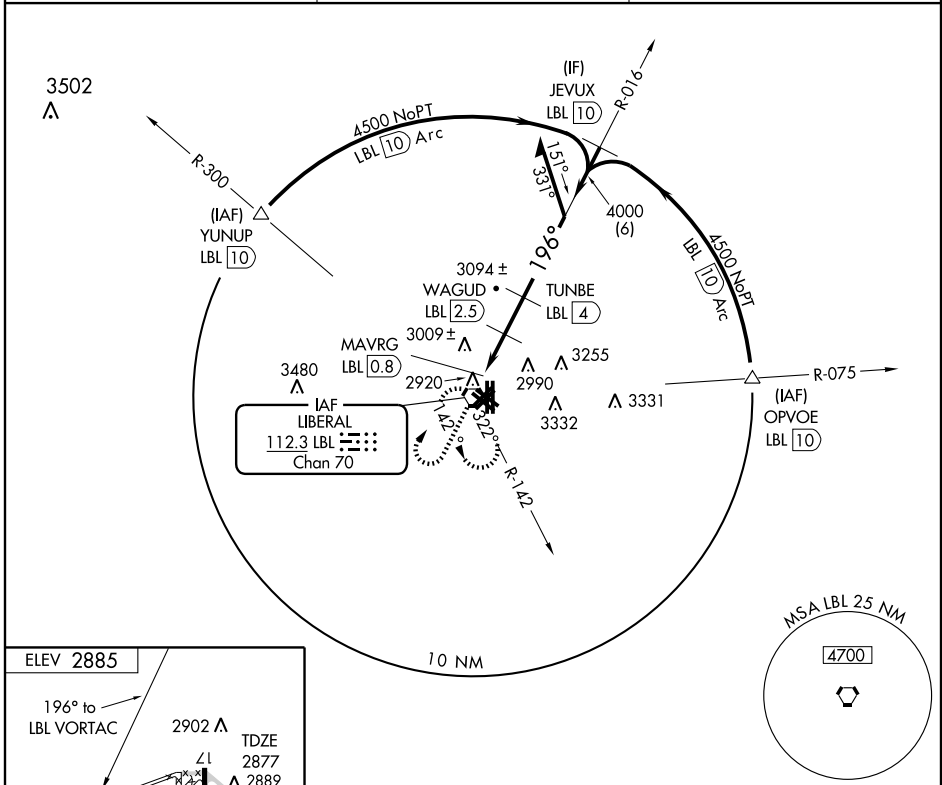
LIBERAL MID-AMERICA RGNL (L.B.L)

VORTAC LBL <b>112.3</b> Chan 70	APP CRS <b>196°</b>	Rwy Idg TDZE Apt Elev	<b>7105</b> <b>2877</b> <b>2885</b>
---------------------------------------	------------------------	-----------------------------	---

**⚠** Circling NA east of Rwy 17-35. If local altimeter setting not received, use Guymon Muni altimeter setting and increase all MDAs 120 feet. Visibility reduction by helicopters NA. VDP NA when using Guymon Muni altimeter setting.

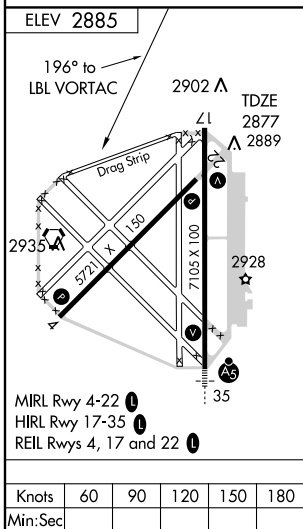
**⚠** MISSED APPROACH: Climb to 4000 then climbing right turn to 4600 direct LBL VORTAC and hold.

AWOS-3 <b>118.375</b>	KANSAS CITY CENTER <b>134.0 298.0</b>	UNICOM <b>122.8 (CTAF)</b>
--------------------------	--	-------------------------------



NC-2, 22 OCT 2009 to 19 NOV 2009

NC-2, 22 OCT 2009 to 19 NOV 2009



4000	4600	LBL 112.3	VORTAC	Remain within 10 NM
<p>VGSI and descent angles not coincident.</p> <p>016°</p> <p>196°</p> <p>4600</p> <p>4000</p> <p>3480</p> <p>3.21° TCH 45</p> <p>MAVRG LBL 0.8</p> <p>WAGUD LBL 2.5</p> <p>TUNBE LBL 4</p> <p>1.1 0.6 1.5 NM</p>				
CATEGORY	A	B	C	D
S-17	3260-1 383 (400-1)			3260-1¼ 383 (400-1¼)
CIRCLING	3340-1 455 (500-1)		3340-1½ 455 (500-1½)	3440-2 555 (600-2)