

VOR RWY 4

LIBERAL MID-AMERICA RGNL (L.B.L)

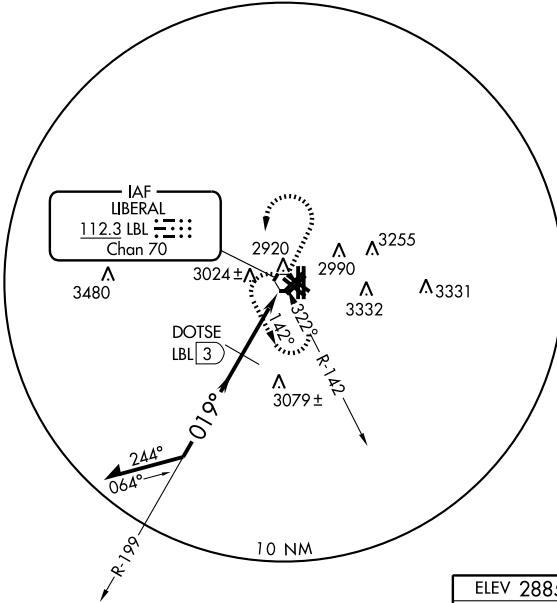
VORTAC LBL 112.3 Chan 70	APP CRS 019°	Rwy Idg TDZE Apt Elev	5721 2885 2885
---------------------------------------	------------------------	-----------------------------	---

⚠ Circling NA east of Rwy 17-35. If local altimeter setting not received, use Guymon Muni altimeter setting and increase all MDAs 120 feet. Visibility reduction by helicopters NA. VDP NA when using Guymon Muni altimeter setting.

MISSED APPROACH: Climb to 4000 then climbing left turn to 4600 direct LBL VORTAC and hold.

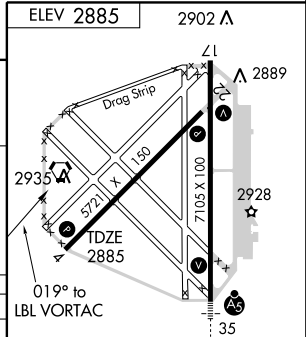
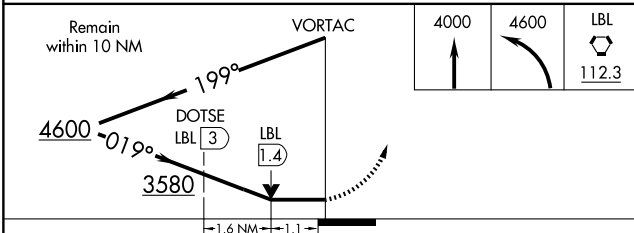
AWOS-3 118.375	KANSAS CITY CENTER 134.0 298.0	UNICOM 122.8 (CTAF) 0
--------------------------	--	---------------------------------

⚠
3502



NC-2, 22 OCT 2009 to 19 NOV 2009

NC-2, 22 OCT 2009 to 19 NOV 2009



CATEGORY	A	B	C	D
S-4	3580-1 695 (700-1)		3580-2 695 (700-2)	3580-2 1/4 695 (700-2 1/4)
CIRCLING	3580-1 695 (700-1)		3580-2 695 (700-2)	3580-2 1/4 695 (700-2 1/4)
DME MINIMUMS				
S-4	3280-1 395 (400-1)			3280-1 1/4 395 (400-1 1/4)
CIRCLING	3340-1 455 (500-1)		3340-1 1/2 455 (500-1 1/2)	3440-2 555 (600-2)

REIL Rwy 4, 17 and 22 **0**
 MRL Rwy 4-22 **0**
 HIRL Rwy 17-35 **0**

Knots	60	90	120	150	180
Min:Sec					