

LIBERAL, KANSAS

AL-498 (FAA)

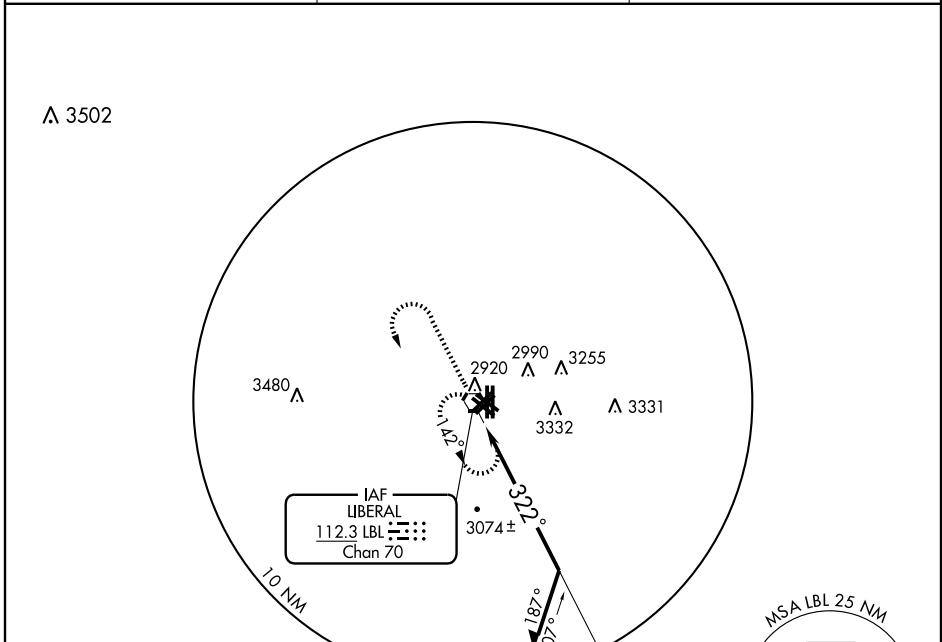
VORTAC LBL 112.3 Chan 70	APP CRS 322°	Rwy Idg TDZE Apt Elev	7105 2875 2885
--	------------------------	-----------------------------	---

VOR RWY 35
LIBERAL MID-AMERICA RGNL (L.B.L.)

▼ Inoperative table does not apply to Cats C and D. Circling NA east of Rwy 17-35.
 ▲ If local altimeter setting not received, use Guymon Muni altimeter setting and increase all MDAs 120 feet. VDP NA when using Guymon Muni altimeter setting.

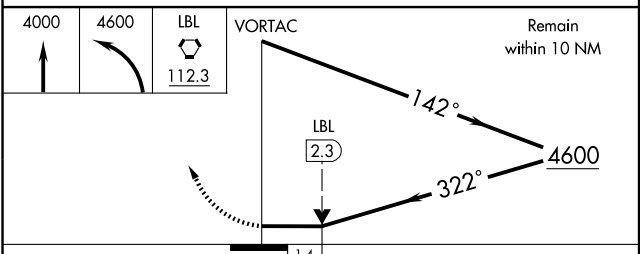
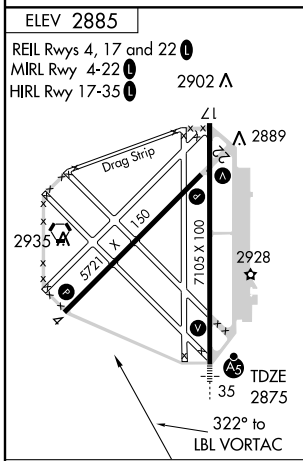
MALS MISSED APPROACH: Climb to 4000 then climbing left turn to 4600 direct LBL VORTAC and hold.

AWOS-3 118,375	KANSAS CITY CENTER 134.0 298.0	UNICOM 122.8 (CTAF) 0
--------------------------	--	---------------------------------



NC-2, 22 OCT 2009 to 19 NOV 2009

NC-2, 22 OCT 2009 to 19 NOV 2009



ELEV 2885	REIL Rwy 4, 17 and 22	MIRL Rwy 4-22	HIRL Rwy 17-35	2902
2935	2928	2889	2928	2902
5721	150	100 X 50 FT	1705 X 50 FT	35
322° to LBL VORTAC				

CATEGORY	A	B	C	D
S-35	3380-½ 505 (500-½)		3380-1½ 505 (500-1½)	
CIRCLING	3380-1 495 (500-1)		3380-1½ 3440-2 495 (500-1½) 555 (600-2)	

LIBERAL, KANSAS
Amdt 12 07298

37° 03' N-100° 58' W

LIBERAL MID-AMERICA RGNL (L.B.L.)
VOR RWY 35