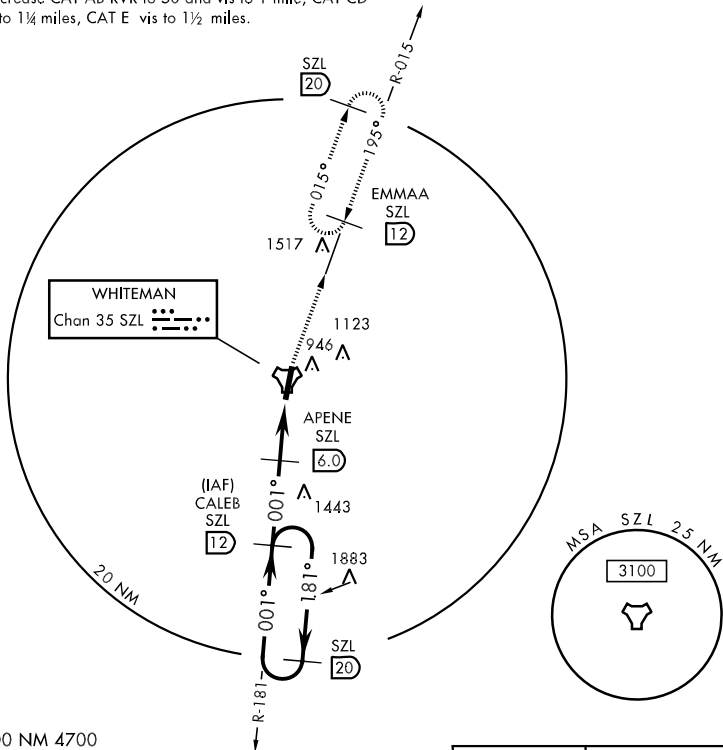


TACAN Chan 35	APCH CRS 001°	Rwy ldg 12,400 TDZE 837 Arprt Elev 870	AL-496 [USAF]	WHITEMAN AFB (KSZL)
* When ALS inop, increase CAT AB RVR to 50 and vis to 1 mile, CAT CD RVR to 60 and vis to 1¼ miles, CAT E vis to 1½ miles. ** Circling not authorized W of Rwy 1-19.			ALSF-1 (A1)	MISSED APPROACH: Climb to 3000 via SZL TACAN R-015 to EMMAA and hold.

ATIS ★ 118.725 239.025	WHITEMAN APP CON 127.45 284.0	WHITEMAN TOWER 132.4 255.6	GND CON 128.275 275.8	CLNC DEL 121.75 335.8	ASR
----------------------------------	---	--------------------------------------	---------------------------------	---------------------------------	-----

*** When ALS inop, increase CAT AB RVR to 50 and vis to 1 mile, CAT CD RVR to 60 and vis to 1¼ miles, CAT E vis to 1½ miles.



EMERG SAFE ALT 100 NM 4700

CALEB (SZL 12) at 3000, APENE (SZL 6.0) at 2300, TACAN (SZL 20) at 1883.					ELEV 870	
3000 SZL R-015, EMMAA (SZL 12) at 1009.						
181° ← 001° →	001° →		2.6 COBLU (SZL 1.8)			
4.2 NM ← → 0.5						
2.85° TCH 50						
CATEGORY	A	B	C	D	E	HIRL Rwy 1-19
S-1 *	1260/24	423 (400-½)	1260/40	423 (400-¾)	1260/50 423 (400-1)	
CIRCLING **	1340-1	470 (500-1)	1340-1½ 470 (500-1½)	1420-2 550 (600-2)	1460-2 590 (600-2)	
S-ASR 1 ***	1260/24	423 (400-½)	1260/40	423 (400-¾)	1260/50 423 (400-1)	

NC-3, 22 OCT 2009 to 19 NOV 2009

NC-3, 22 OCT 2009 to 19 NOV 2009