

KNOB NOSTER, MISSOURI

RNAV (GPS) RWY 1

| | |
|-------------------------|--|
| APCH CRS 007° | Rwy Idg 12,400 TDZE 837 Arpt Elev 870 |
|-------------------------|--|

AL-496 [USAF]

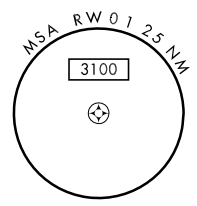
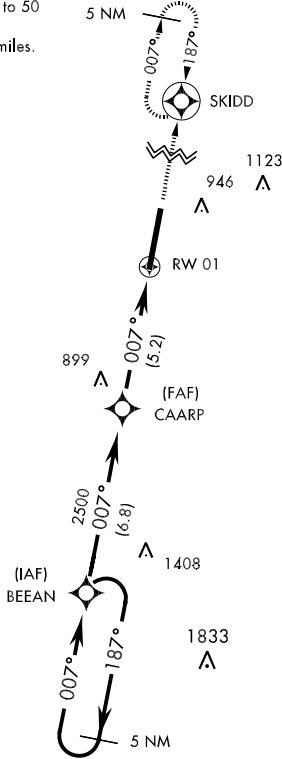
WHITEMAN AFB (KSZL)

| | | |
|---|----------------------|--|
| <p>▼ * When ALS inop, increase CAT AB RVR to 50 and vis to 1 mile, CAT CD RVR to 60 and vis to 1½ miles, CAT E vis to 1½ miles. ** Circling not authorized W of Rwy 1-19.</p> | <p>ALSF-1 A1</p> | <p>MISSED APPROACH: Climb to 3000 direct SKIDD and hold.</p> |
|---|----------------------|--|

| | | | | | |
|--|---|--|---|---|------------|
| <p>ATIS ★ 118.725 239.025</p> | <p>WHITEMAN APP CON 127.45 284.0</p> | <p>WHITEMAN TOWER 132.4 255.6</p> | <p>GND CON 128.275 275.8</p> | <p>CLNC DEL 121.75 335.8</p> | <p>ASR</p> |
|--|---|--|---|---|------------|

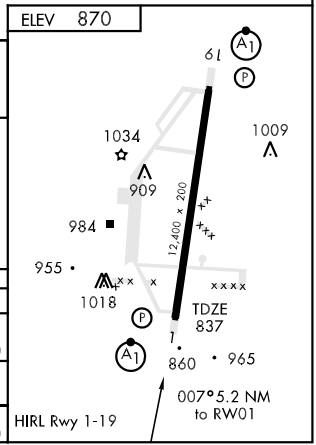
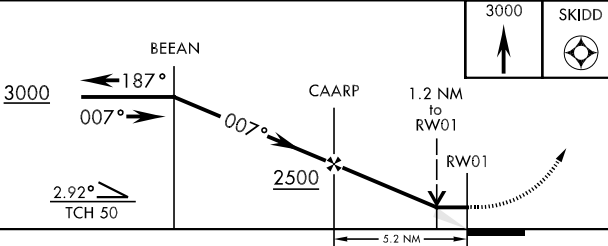
*** When ALS inop, increase CAT AB RVR to 50 and vis to 1 mile, CAT CD RVR to 60 and vis to 1½ miles, CAT E vis to 1½ miles.

DME/DME RNP 0.3 N/A.



EMERG SAFE ALT 100 NM 4700

ELEV 870



| CATEGORY | A | B | C | D | E |
|-------------|---------|-------------|-------------------------|-----------------------|------------------------|
| LNAV MDA * | 1260/24 | 423 (400-½) | 1260/40 | 423 (400-¾) | 1260/50 423 (400-1) |
| CIRCLING ** | 1340-1 | 470 (500-1) | 1340-1½ 470 (500-1½) | 1420-2 550 (600-2) | 1460-2 590 (600-2) |
| S-ASR 1 *** | 1260/24 | 423 (400-½) | 1260/40 | 423 (400-¾) | 1260/50 423 (400-1) |

HIRL Rwy 1-19

KNOB NOSTER, MISSOURI
Orig 09155

38° 43'N-93° 33'W

WHITEMAN AFB (KSZL)

RNAV (GPS) RWY 1

NC-3, 22 OCT 2009 to 19 NOV 2009

NC-3, 22 OCT 2009 to 19 NOV 2009