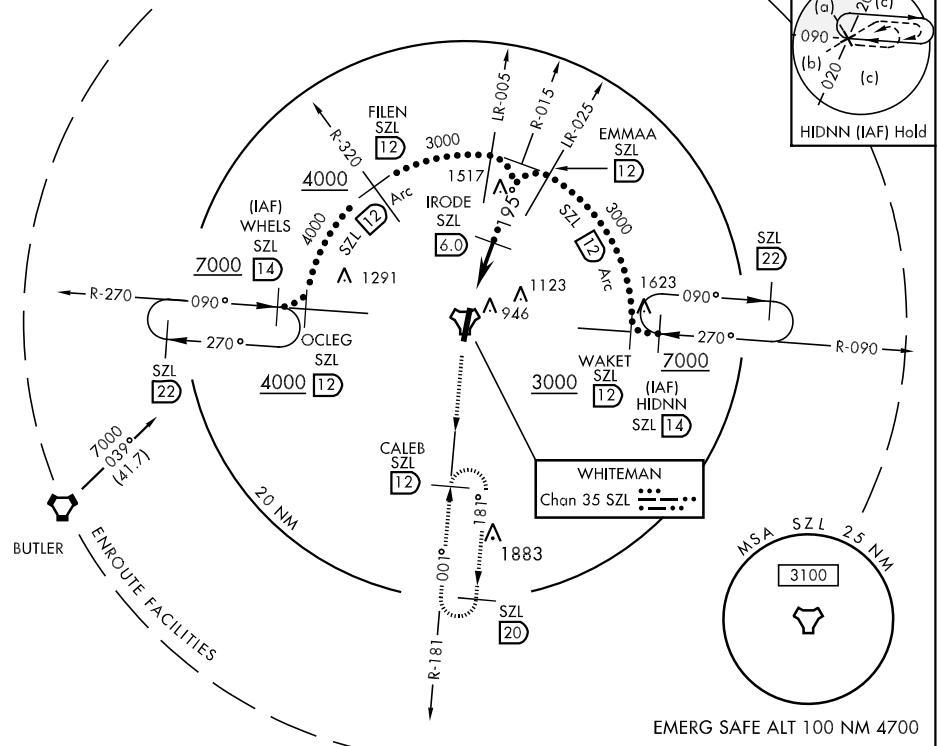


TACAN Chan 35	APCH CRS 195°	Rwy Idg 12,400 TDZE 870 Arprt Elev 870	JAL-496 [USAF]	WHITEMAN AFB (KSZL)	
* When ALS inop, increase CAT C RVR to 50 and vis to 1 miles, CAT DE RVR to 60 and vis to 1¼ miles. ** Circling not authorized W of Rwy 1-19.			ALSF-1 	MISSED APPROACH: Climb to 3000 via SZL TACAN R-181 to CALEB and hold.	
ATIS * 118.725 239.025	WHITEMAN APP CON 127.45 284.0	WHITEMAN TOWER 132.4 255.6	GND CON 128.275 275.8	CLNC DEL 121.75 335.8	ASR

*** When ALS inop, increase CAT DE RVR to 60, vis to 1¼ miles.



NC-3, 22 OCT 2009 to 19 NOV 2009

NC-3, 22 OCT 2009 to 19 NOV 2009

3000 SZL R-181	CALEB SZL 12	EMMAA SZL 12	
TACAN	SAVBE 1.2	2300	
0.5	4.8 NM	195°	
IRODE 6 3000 2.48° TCH 46			
CATEGORY	C	D	E
S-19 *	1260/40	390	(400-34)
CIRCLING **	1340-1½ 470 (500-1½)	1420-2 550 (600-2)	1460-2 590 (600-2)
S-ASR 19 ***	1260/40	390	(400-34)

