

TACAN SZL Chan 35	APCH CRS 001°	Rwy ldg 12,400 TDZE 837 Arpt Elev 870
----------------------	------------------	---

JAL-496 [USAF]

WHITEMAN AFB (KSZL)

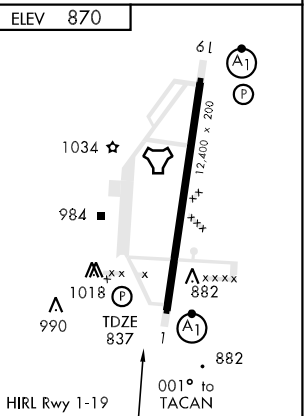
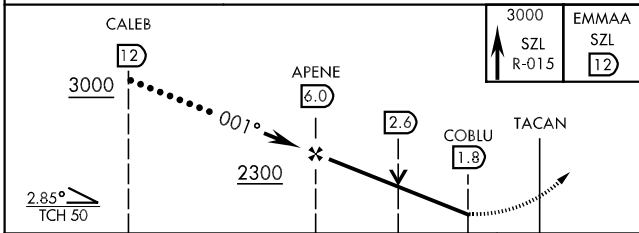
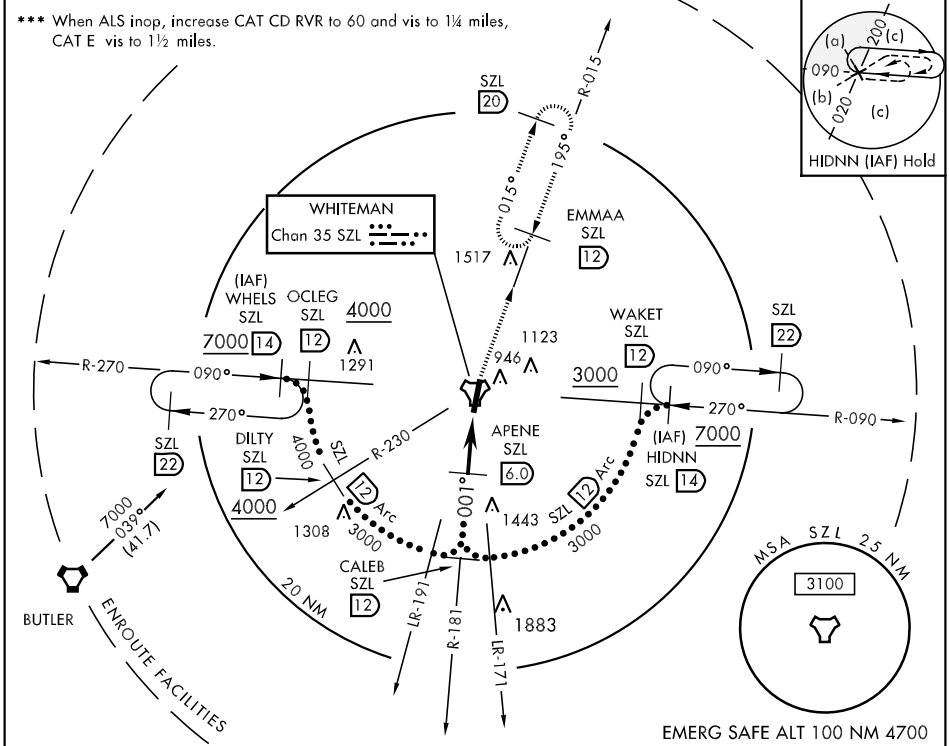
ALSF-1

 MISSED APPROACH: Climb to 3000 via SZL TACAN R-015 to EMMAA and hold.

* When ALS inop, increase CAT CD RVR to 60 and vis to 1 1/4 miles, CAT E vis to 1 1/2 miles.

 ** Circling not authorized W of Rwy 1-19.

ATIS * 118.725 239.025	WHITEMAN APP CON 127.45 284.0	WHITEMAN TOWER 132.4 255.6	GND CON 128.275 275.8	CLNC DEL 121.75 335.8	ASR
---	--	---	--	--	------------



CATEGORY	C	D	E
S-1 *	1260/40	423 (400-3/4)	1260/50 423 (400-1)
CIRCLING **	1340-1 1/2 470 (500-1 1/2)	1420-2 550 (600-2)	1460-2 590 (600-2)
S-ASR 1 ***	1260/40	423 (400-3/4)	1260/50 423 (400-1)

NC-3, 22 OCT 2009 to 19 NOV 2009

NC-3, 22 OCT 2009 to 19 NOV 2009