

RNAV (GPS) RWY 17

INDEPENDENCE MUNI (IDP)

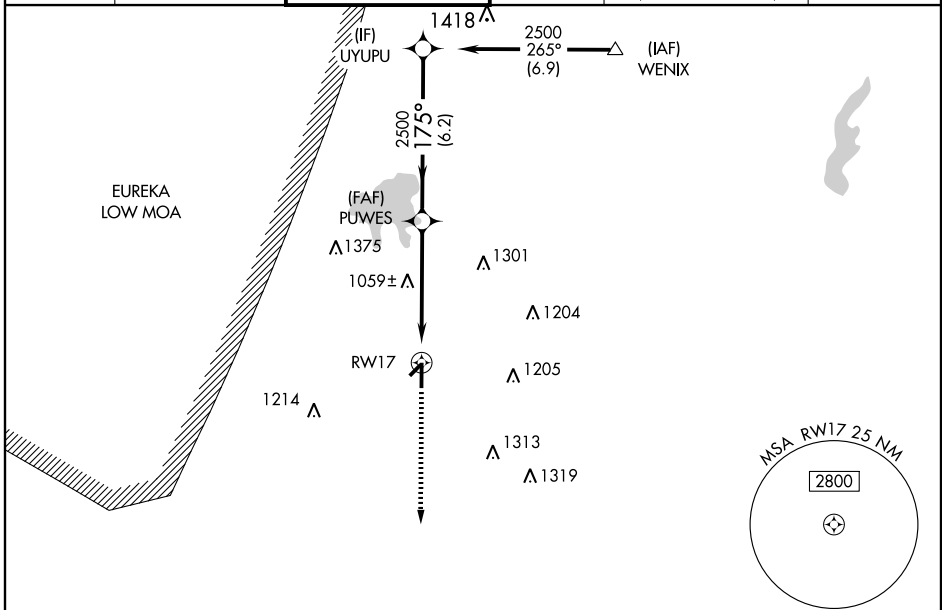
APP CRS 175°	Rwy Idg 5500
	TDZE 821
	Apt Elev 825

▽ DME/DME RNP-0.3 NA. Visibility reduction by helicopters NA. VDP NA when using Coffeyville altimeter setting. When local altimeter setting not received, use Coffeyville altimeter setting and increase all MDA 40 feet and increase LNAV Cat C visibility ¼ mile.

△ NA

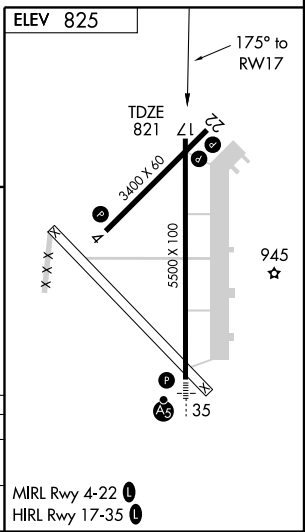
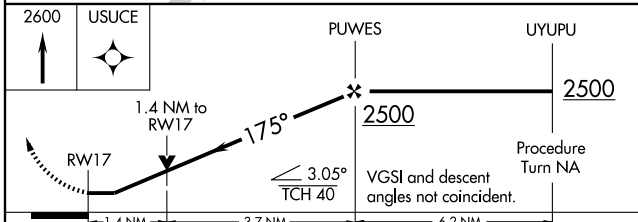
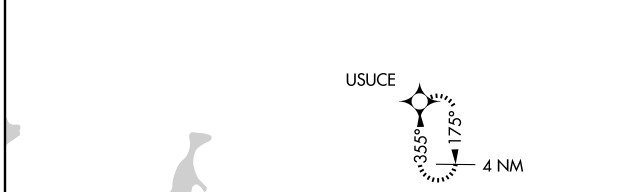
MISSED APPROACH: Climb to 2600 direct USUCE and hold.

AWOS-3 118.525	KANSAS CITY CENTER 132.9 279.5	INDEPENDENCE TOWER * 126.075 (CTAF) 0	GND CON 119.225	KANSAS CITY CLNC DEL 121.65 (When tower closed)	UNICOM 122.95
--------------------------	--	--	---------------------------	--	-------------------------



NC-2, 22 OCT 2009 to 19 NOV 2009

NC-2, 22 OCT 2009 to 19 NOV 2009



CATEGORY	A	B	C	D
LNAV MDA	1320-1	499 (500-1)	1320-1½ 499 (500-1¼)	NA
CIRCLING	1320-1	495 (500-1)	1320-1½ 495 (500-1½)	NA

MIRL Rwy 4-22 **1**
HIRL Rwy 17-35 **1**