

TOAD-TWO DEPARTURE

SHL-494 [USAF]

HOMESTEAD, FLORIDA

| Rwy | Knots | 60 | 120 | 180 | 240 | 300 | 360 |
|-----------------|-------|-----|-----|------|------|------|------|
| 5 (a) V/V(fpm) | | 333 | 666 | 999 | 1332 | 1665 | 1998 |
| 5 (b) V/V(fpm) | | 431 | 862 | 1293 | 1724 | 2155 | 2586 |
| 23 (a) V/V(fpm) | | 333 | 666 | 999 | 1332 | 1665 | 1998 |
| 23 (b) V/V(fpm) | | 431 | 862 | 1293 | 1724 | 2155 | 2586 |

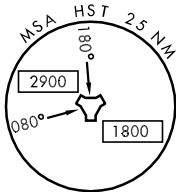
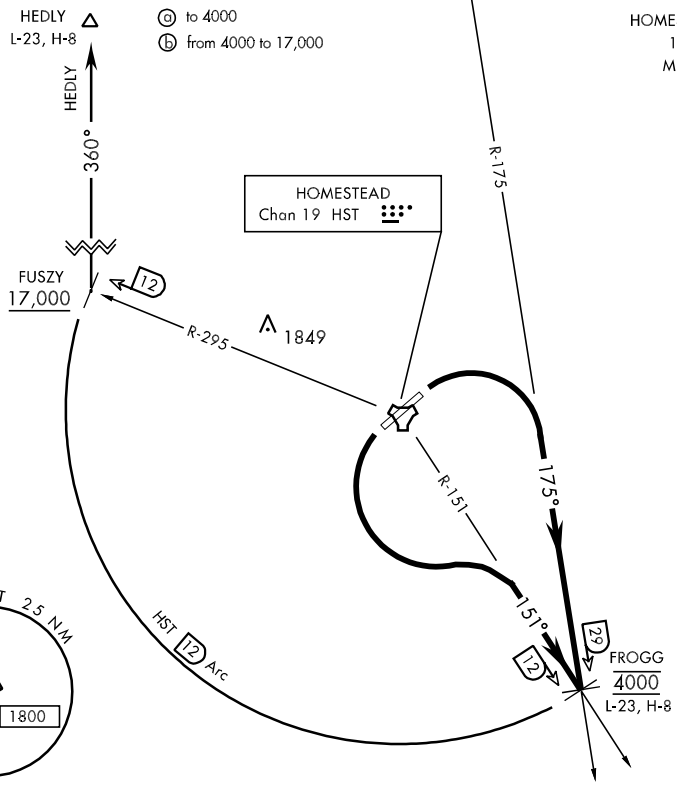
ATC Minimum Climb Rate

- HEDLY Δ (a) to 4000
- L-23, H-8 (b) from 4000 to 17,000

ATIS ★
 132.275 269.9
 CLNC DEL
 275.8
 GND CON
 121.75 275.8
 HOMESTEAD TOWER
 133.45 279.55
 MIAMI DEP CON
 125.5 354.1

HOMESTEAD
 Chan 19 HST

DOLPHIN
 113.9 DHP
 Chan 86



EMERG SAFE ALT 100 NM 15,000

DEPARTURE ROUTE DESCRIPTION

TAKE-OFF RWY 5: Track heading 050° to 1 DME, cross departure end at or below 1000. Turn right, intercept the DHP R-175 outbound to FROGG (DHP R-175/29 DME). Cross FROGG at 4000. Then via _____ (Transition) or assigned route.

TAKE-OFF RWY 23: Track heading 230° to 1 DME, cross departure end at or below 1000. Turn left, intercept the HST R-151 outbound to FROGG (HST R-151/12 DME). Cross FROGG at 4000. Then via _____ (Transition) or assigned route.

FUSZY TRANSITION: Arc north along HST 12 DME arc to FUSZY (HST R-295/12 DME). Cross FUSZY at or above 17,000.

HEDLY TRANSITION: Arc north along HST 12 DME arc to FUSZY (HST R-295/12 DME). Cross FUSZY at or above 17,000. At FUSZY fly heading 360° to HEDLY (DHP R-344/47 DME).

TOAD-TWO DEPARTURE

SE-3, 22 OCT 2009 to 19 NOV 2009

SE-3, 22 OCT 2009 to 19 NOV 2009