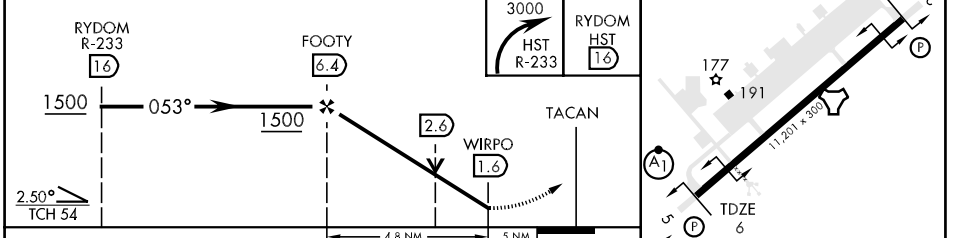
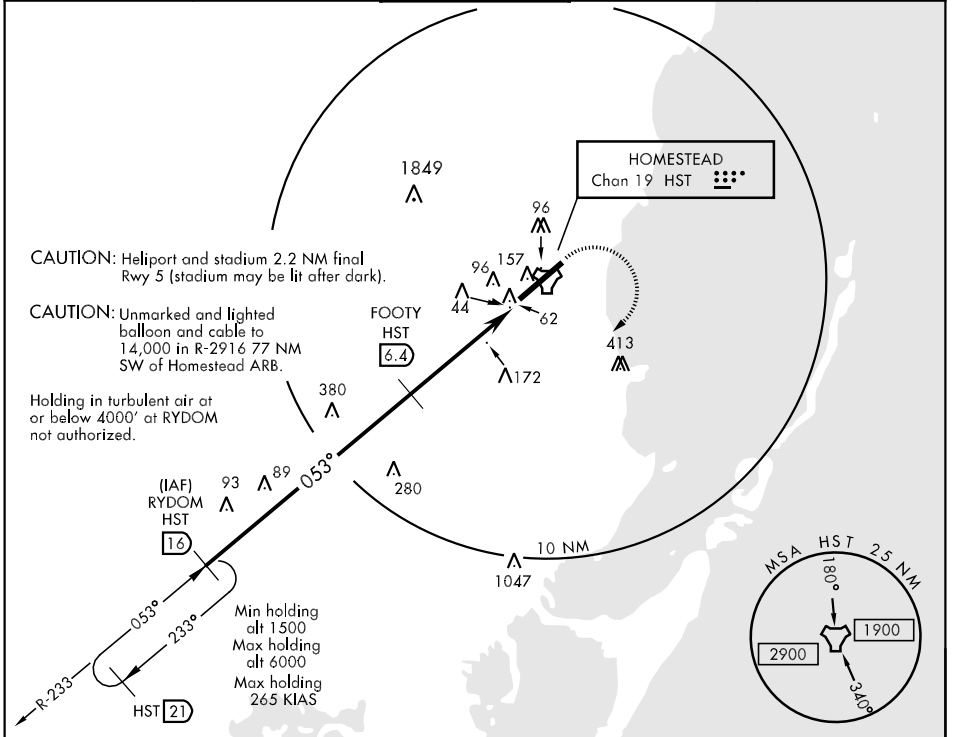


TACAN HST Chan <b>19</b>	APCH CRS <b>053°</b>	Rwy Idg TDZE Arpt Elev <b>11,201</b> <b>6</b> <b>5</b>	AL-494 [USAF]	HOMESTEAD ARB (KHST)
<p>▼ * When ALS inop, increase CAT AB RVR to 50 and vis to 1 mile, CAT C RVR to 60 and vis to 1 ½ miles, CAT DE vis to 1 ½ miles. ** Circling not authorized in NW quadrant.</p>			ALSF-1 	MISSED APPROACH: Climbing right turn to 3000 intercept HST R-233 to RYDOM/HST 16 DME and hold as published.

ATIS ★ <b>132.275 269.9</b>	HOMESTEAD APP CON <b>123.8 257.675</b>	HOMESTEAD TOWER <b>133.45 279.55</b>	GND CON <b>121.75 275.8</b>	CLNC DEL <b>275.8</b>
--------------------------------	---	---	--------------------------------	--------------------------



CATEGORY	A	B	C	D	E
S-5 *	440/24	434 (500-½)	440/40 434 (500-¾)	440/50	434 (500-1)
CIRCLING**	520-1 515 (600-1)	520-1 ½ 515 (600-1½)	560-2 555 (600-2)	780-2 ¾	775 (800-2¾)

HIRL Rwy 5-23

SE-3, 22 OCT 2009 to 19 NOV 2009

SE-3, 22 OCT 2009 to 19 NOV 2009