

HOMESTEAD, FLORIDA

TACAN RWY 23

TACAN HST Chan 19	APCH CRS 231°	Rwy Idg 11,201 TDZE 6 Arpt Elev 5
----------------------	------------------	---

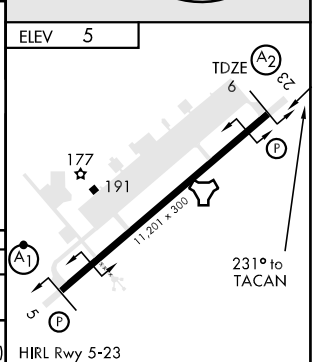
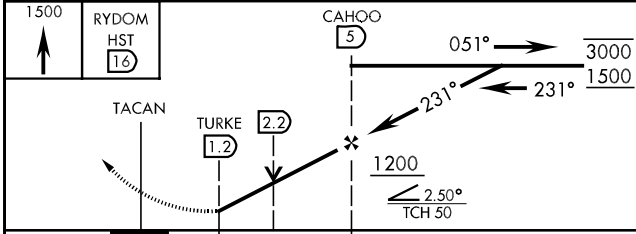
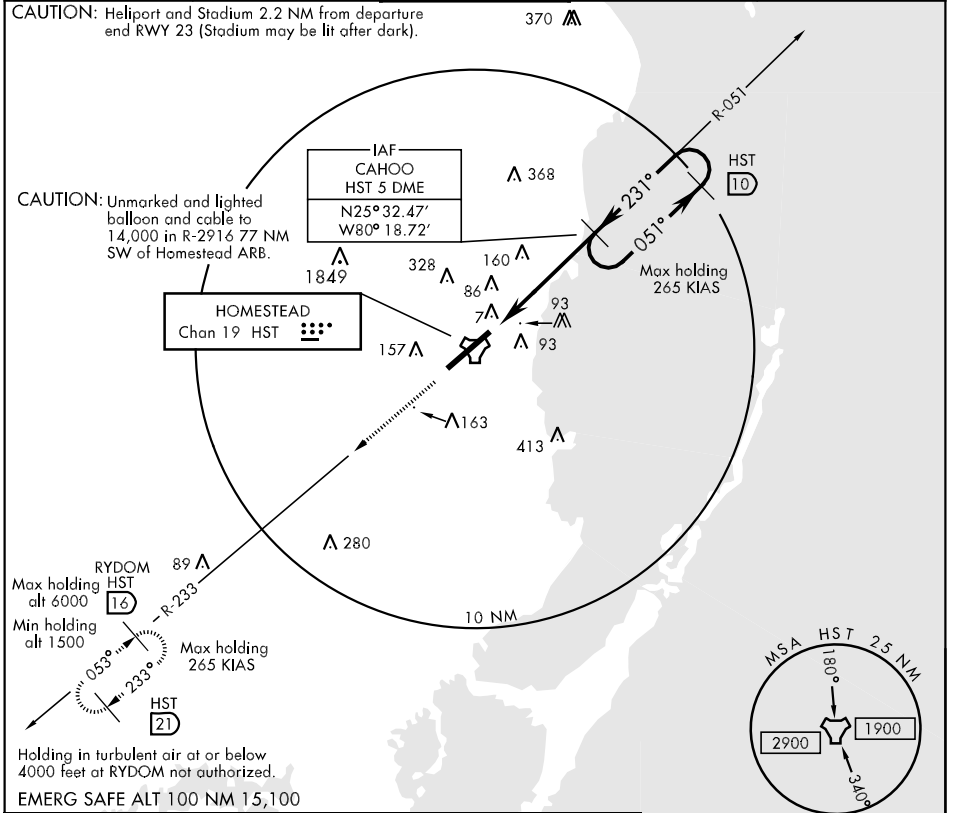
AL-494 [USAF]

HOMESTEAD ARB (KHST)

▼ * When ALS inop, increase CAT AB RVR to 50 and vis 1 mile, CAT C RVR 60 and vis 1½ miles, and CAT DE vis to 1½ mile.
**** Circling not authorized in NW quadrant.**

(A2) MISSED APPROACH: Climb to 1500 proceed RYDOM via HST R-233 and hold as published.

ATIS ★ 132.275 269.9	HOMESTEAD APP CON 123.8 257.675	HOMESTEAD TOWER 133.45 279.55	GND CON 121.75 275.8	CLNC DEL 275.8
-------------------------	------------------------------------	----------------------------------	-------------------------	-------------------



CATEGORY	A	B	C	D	E
S-23 *	440/40	434 (500-¾)	440/50 434 (500-1)	440/60	434 (500-1¼)
CIRCLING**	520-1	515 (600-1)	520-1½ 515(600-1½)	560-2 555 (600-2)	780-2¾ 775(800-2¾)

HOMESTEAD, FLORIDA
Amdt 3 09267

25°29'N-80°23'W

HOMESTEAD ARB (KHST)

TACAN RWY 23

SE-3, 22 OCT 2009 to 19 NOV 2009

SE-3, 22 OCT 2009 to 19 NOV 2009