

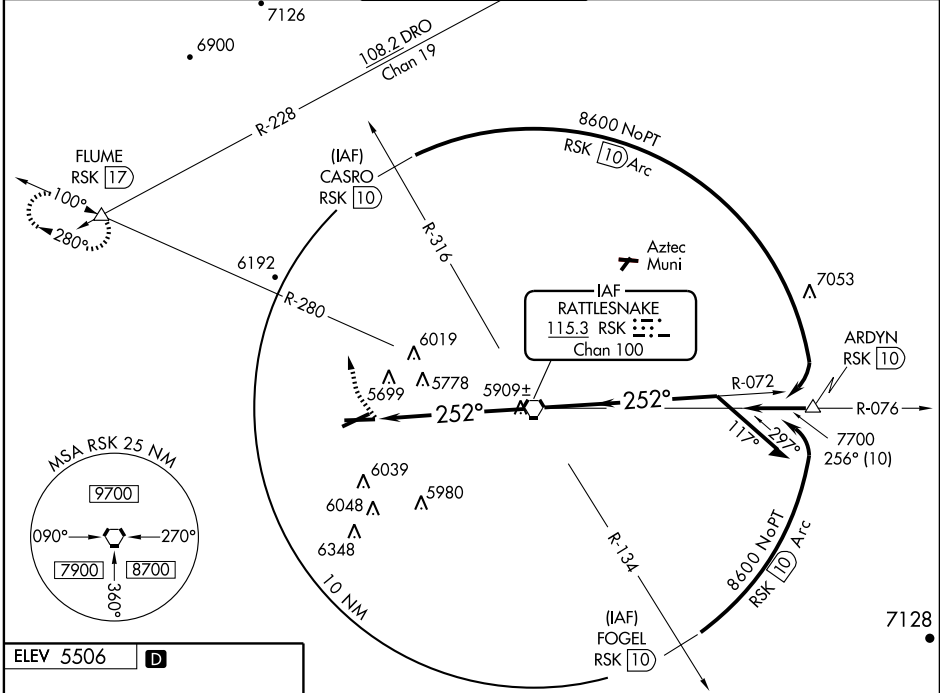
# VOR RWY 25

FARMINGTON/FOUR CORNERS RGNL (FMN)

VORTAC RSK <b>115.3</b> Chan 100	APP CRS <b>252°</b>	Rwy Idg TDZE Apt Elev <b>6277</b> <b>5506</b> <b>5506</b>
--	------------------------	--

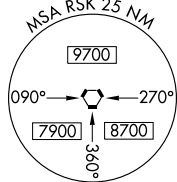
MISSED APPROACH: Climbing right turn to 9000 via RSK R-280 to FLUME Int and hold.

ATIS <b>127.15</b>	DENVER CENTER <b>118.575 348.7</b>	FARMINGTON TOWER★ <b>118.9</b> (CTAF) <b>0 257.8</b>	GND CON <b>121.7</b>	UNICOM <b>122.95</b>
-----------------------	---------------------------------------	---	-------------------------	-------------------------

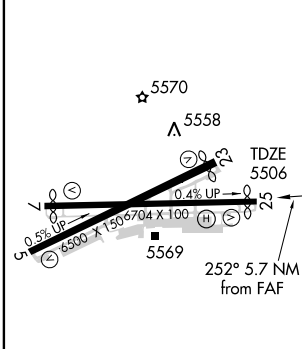


SW-1, 22 OCT 2009 to 19 NOV 2009

SW-1, 22 OCT 2009 to 19 NOV 2009



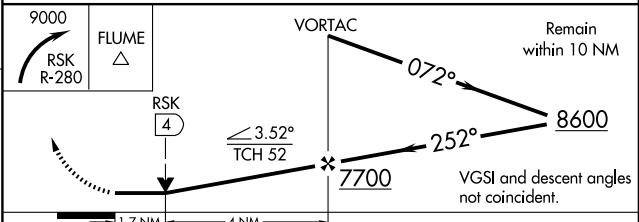
ELEV 5506	<b>D</b>
-----------	----------



REIL Rws 23 and 25  
MIRL Rws 5-23 and 7-25

FAF to MAP 5.7 NM

Knots	60	90	120	150	180
Min:Sec	5:42	3:48	2:51	2:17	1:54



CATEGORY	A	B	C	D
S-25	6120-1 614 (700-1)		6120-1¾ 614 (700-1¾)	NA
CIRCLING	6120-1 614 (700-1)		6160-1¾ 654 (700-1¾)	NA

# VOR RWY 25