

RNAV (GPS) RWY 7

FARMINGTON/ FOUR CORNERS RGNL (FMN)

WAAS CH 90110 W07A	APP CRS 076°	Rwy Idg TDZE Apt Elev	6277 5502 5506
---------------------------------	------------------------	-----------------------------	---

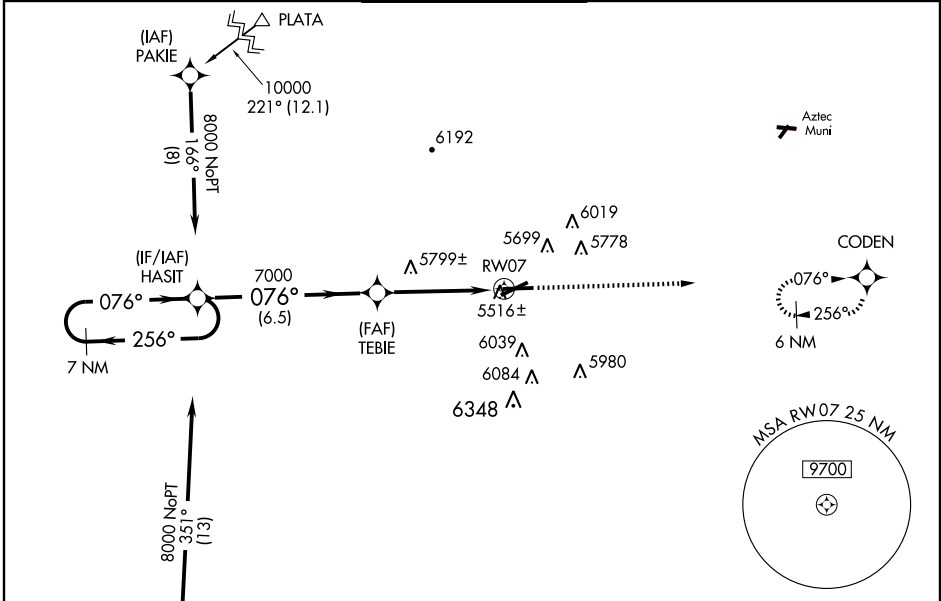
⚠ Cat D circling not authorized southeast of Rwy 5 and 25.
⚠ Baro-VNAV NA below -26°C (-14°F).
 DME/DME RNP- 0.3 NA.
 If local altimeter setting not received, use Durango-La Plata County, CO altimeter setting and increase all DAs/MDAs 260 feet.

MISSED APPROACH: Climb to 8300 direct CODEN and hold.

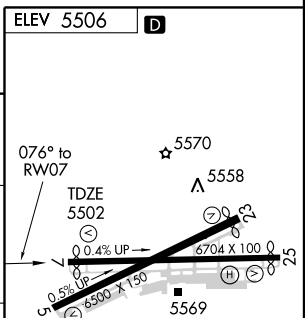
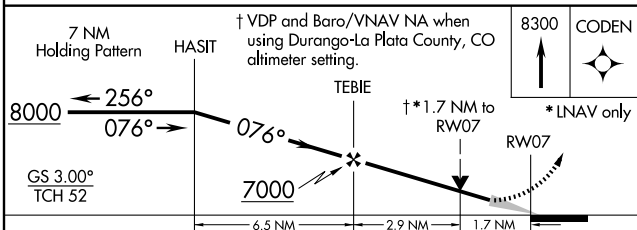
ATIS 127.15	DENVER CENTER 118.575 348.7	FARMINGTON TOWER* 118.9(CTAF) 0 257.8	GND CON 121.7	UNICOM 122.95
-----------------------	---------------------------------------	--	-------------------------	-------------------------

SW-1, 22 OCT 2009 to 19 NOV 2009

SW-1, 22 OCT 2009 to 19 NOV 2009



(IAF) DERMA Procedure NA for arrivals at DERMA via V95 southwest bound.



CATEGORY	A	B	C	D
LPV DA	5760-1 258 (300-1)			
LNAV/VNAV DA	5980-1¾ 478 (500-1¾)			
LNAV MDA	6060-1	558 (600-1)	6060-1½ 558 (600-1½)	6060-1¾ 558 (600-1¾)
CIRCLING	6060-1¾ 554 (600-1¾)	6120-1¾ 614 (700-1¾)	6160-1¾ 654 (700-1¾)	6160-2 654 (700-2)

ELEV 5506 **D**

REIL Rwy 23 and 25 **0**
 MIRL Rwy 5-23 and 7-25 **0**