

RNAV (GPS) RWY 23

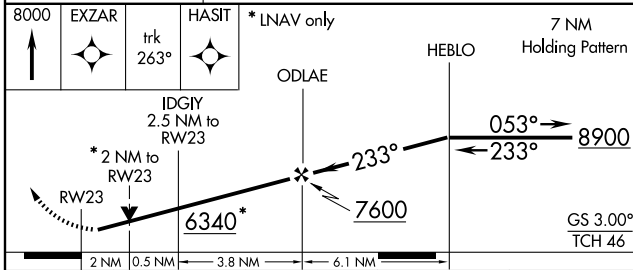
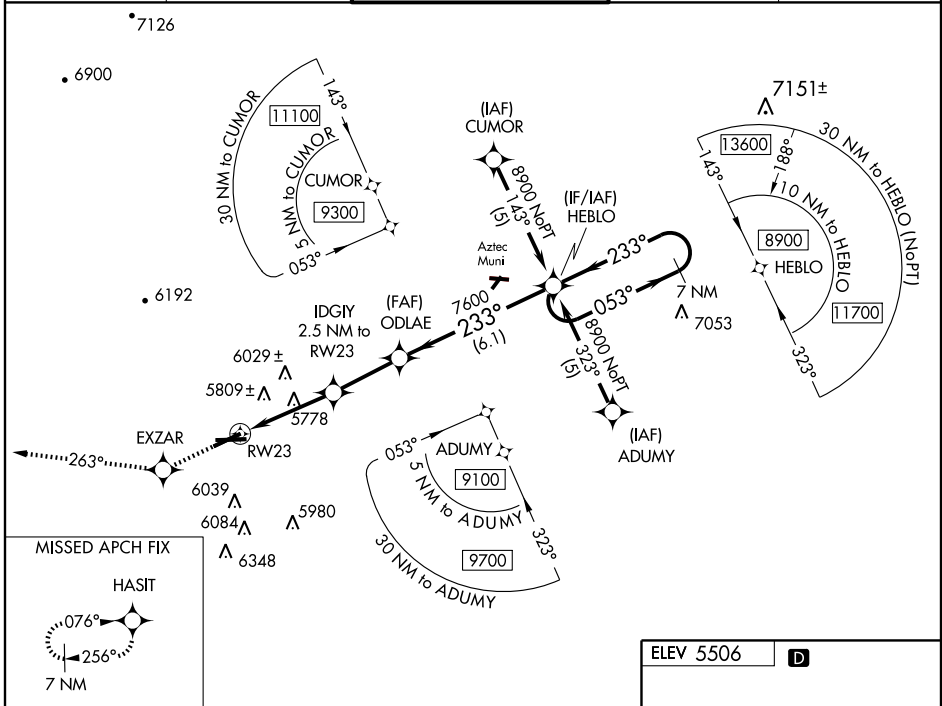
FARMINGTON/FOUR CORNERS RGNL (FMN)

WAAS CH 70714 W23A	APP CRS 233°	Rwy Idg TDZE Apt Elev	6375 5504 5506
--	------------------------	-----------------------------	---

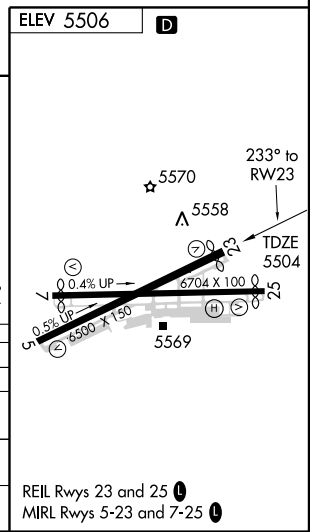
⚠ For uncompensated Baro-VNAV systems, LNAV/VNAV NA below -26°C (-14°F) or above 38°C (100°F).
⚠ Circling NA Cat D southeast of Rwy 5 and 25.
 DME/DME RNP-0.3 NA. Visibility reduction by helicopters NA.

MISSED APPROACH: Climb to 8000 direct EXZAR and via track 263° to HASIT and hold.

ATIS 127.15	DENVER CENTER 118.575 348.7	FARMINGTON TOWER* 118.9 (CTAF) 257.8	GND CON 121.7	UNICOM 122.95
-----------------------	---------------------------------------	--	-------------------------	-------------------------



CATEGORY	A	B	C	D
LPV DA		5798-1	294 (300-1)	
LNAV/VNAV DA		6138-2¼	634 (700-2¼)	
LNAV MDA	6180-1 676 (700-1)	6180-2 676 (700-2)	6180-2¼ 676 (700-2¼)	
CIRCLING	6180-1 674 (700-1)	6180-2 674 (700-2)	6180-2¼ 674 (700-2¼)	



SW-1, 22 OCT 2009 to 19 NOV 2009

SW-1, 22 OCT 2009 to 19 NOV 2009