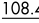
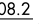
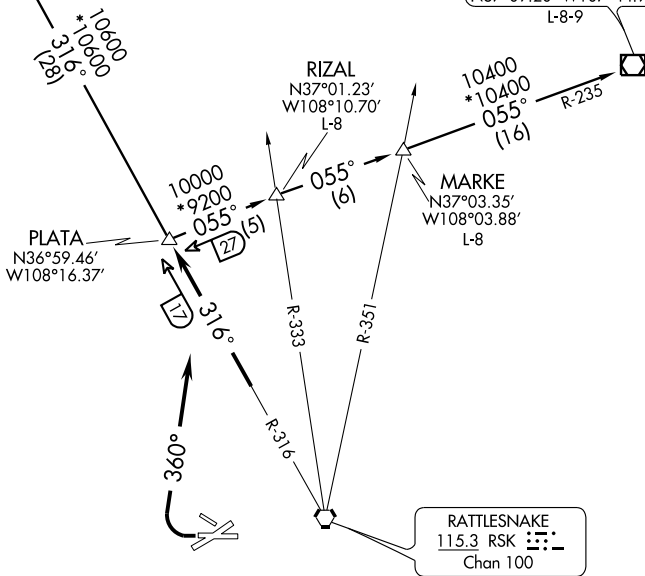


PLATA ONE DEPARTURE

ATIS 127.15
GND CON 121.7
FARMINGTON TOWER 118.9 (CTAF) 257.8
DENVER CENTER 118.575 348.7
UNICOM 122.95

CORTEZ
108.4 CEZ 
Chan 21
N37°23.39'-W108°33.71'
L-8-9

DURANGO
108.2 DRO 
Chan 19
N37°09.20'-W107°44.98'
L-8-9



NOTE: Chart not to scale.

DEPARTURE ROUTE DESCRIPTION

Aircraft departure Runways 23 and 25 turn right heading 360° to intercept RSK R-316 to PLATA INT. Thence via (transition) or (assigned route).

CORTEZ TRANSITION (PLATA1.CEZ): From over PLATA INT via RSK R-316 and CEZ R-136 to CEZ VOR/DME.

DURANGO TRANSITION (PLATA1.DRO): From over PLATA INT via DRO R-235 to DRO VOR/DME.

MARKE TRANSITION (PLATA1.MARKE): From over PLATA INT via DRO R-235 to MARKE INT.

RIZAL TRANSITION (PLATA1.RIZAL): From over PLATA INT via DRO R-235 to RIZAL INT.