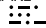
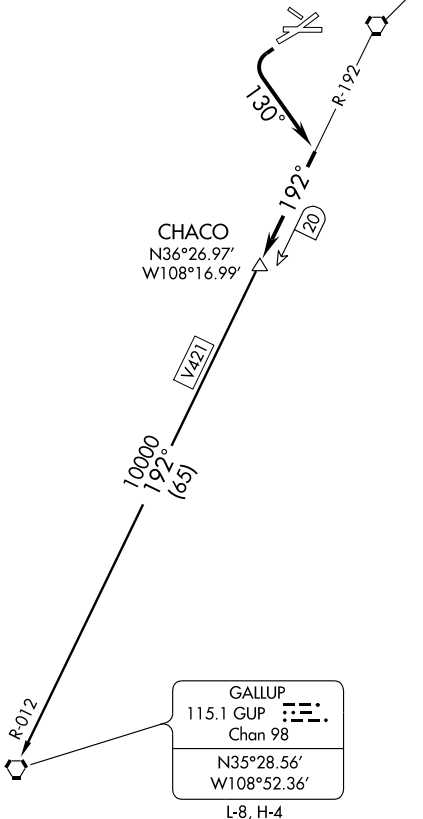


ATIS 127.15  
GND CON  
121.7  
FARMINGTON TOWER  
118.9 (CTAF) 257.8  
DENVER CENTER  
118.575 348.7  
UNICOM 122.95

RATTLESNAKE  
115.3 RSK   
Chan 100



SW-1, 22 OCT 2009 to 19 NOV 2009

SW-1, 22 OCT 2009 to 19 NOV 2009

NOTE: Chart not to scale.  
NOTE: DME required.  
NOTE: This SID requires a minimum climb of 290' per NM to 6500' for Rwy 23 departure.

### DEPARTURE ROUTE DESCRIPTION

Aircraft departing Runways 23 or 25 turn left heading 130° to intercept RSK R-192 to CHACO. Thence via (assigned route).  
GALLUP TRANSITION (CHACO1.GUP): From over CHACO via the RSK R-192 and GUP R-012 to GUP VORTAC.