

VORTAC GCK <b>113.3</b> Chan <b>80</b>	APP CRS <b>286°</b>	Rwy Idg TDZE Apt Elev <b>5700</b> <b>2885</b> <b>2891</b>
----------------------------------------------	------------------------	--------------------------------------------------------------------------

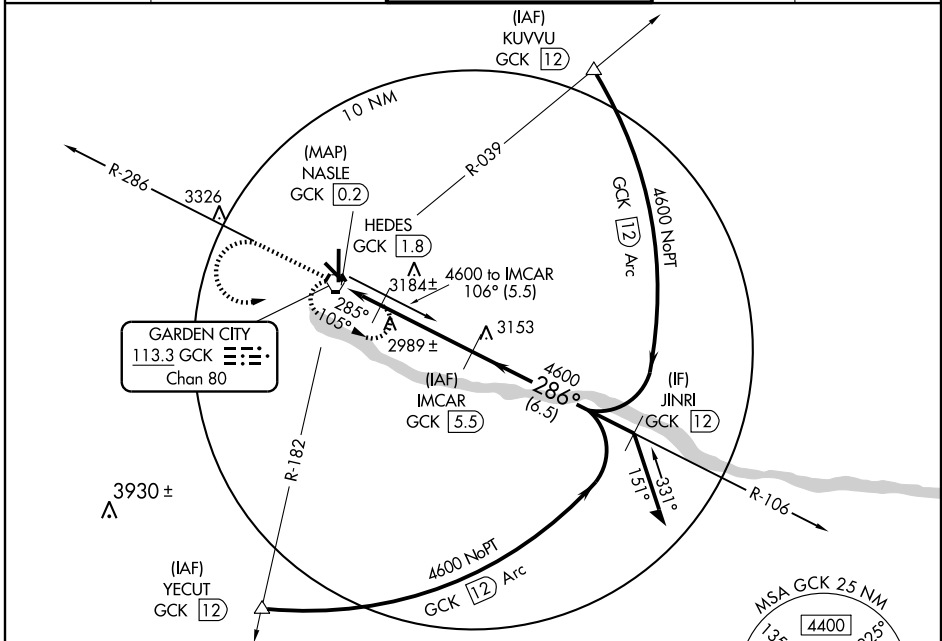
# VOR/DME RWY 30

GARDEN CITY RGNL (GCK)

**▼** If local altimeter setting not received, use Dodge City Rgnl altimeter setting and increase all MDAs 140 feet.  
**▲** Visibility reduction by helicopters NA.

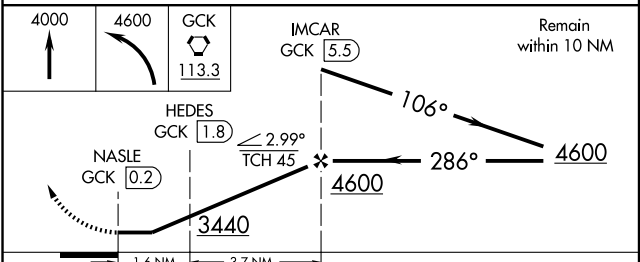
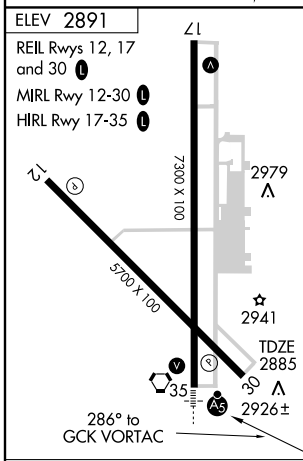
MISSED APPROACH: Climb to 4000 then climbing left turn to 4600 direct GCK VORTAC and hold.

ASOS <b>121.325</b>	KANSAS CITY CENTER <b>125.2 269.4</b>	GARDEN CITY TOWER ★ <b>118.15 (CTAF) 0 254.4</b>	GND CON <b>119.0</b>	UNICOM <b>122.95</b>
------------------------	------------------------------------------	-----------------------------------------------------	-------------------------	-------------------------



NC-2, 22 OCT 2009 to 19 NOV 2009

NC-2, 22 OCT 2009 to 19 NOV 2009



CATEGORY	A	B	C	D
S-30	3240-1 355 (400-1)			3240-1¼ 355 (400-1¼)
CIRCLING	3280-1 389 (400-1)	3360-1 469 (500-1)	3360-1½ 469 (500-1½)	3460-2 569 (600-2)