

VORTAC GCK 113.3 Chan 80	APP CRS 173°	Rwy Idg 7300 TDZE 2889 Apt Elev 2891
--	------------------------	---

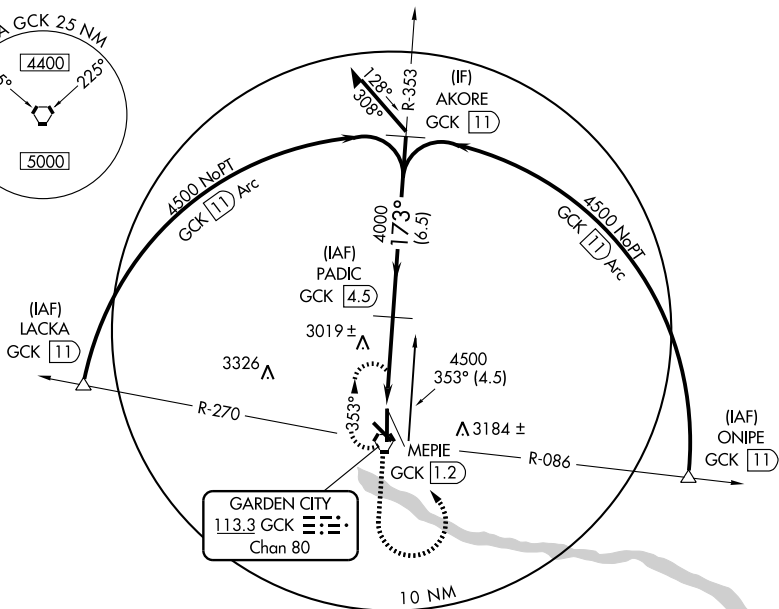
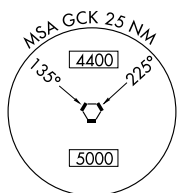
VOR/DME RWY 17

GARDEN CITY RGNL (GCK)

▼ If local altimeter setting not received, use Dodge City Rgnl altimeter setting and increase all MDAs 140 feet.
▲ VDP NA when using Dodge City altimeter setting.

MISSED APPROACH: Climb to 4500, then left turn direct GCK VORTAC and hold.

ASOS 121.325	KANSAS CITY CENTER 125.2 269.4	GARDEN CITY TOWER* 118.15 (CTAF) 0 254.4	GND CON 119.0	UNICOM 122.95
------------------------	--	--	-------------------------	-------------------------

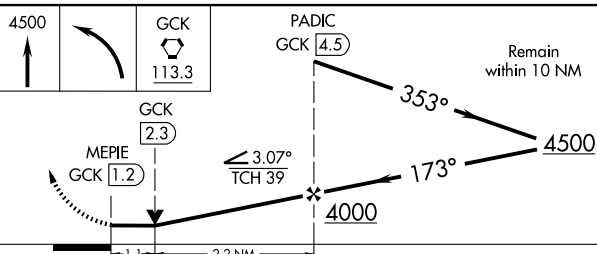
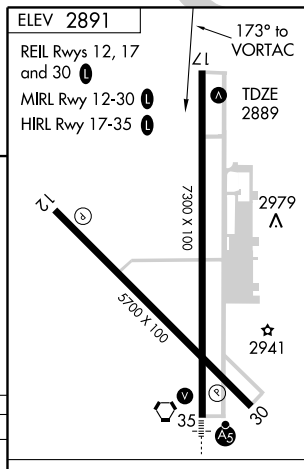


GARDEN CITY
113.3 GCK
Chan 80

NC-2, 22 OCT 2009 to 19 NOV 2009

NC-2, 22 OCT 2009 to 19 NOV 2009

3930± **▲**



CATEGORY	A	B	C	D
S-17	3280-1	391 (400-1)		3280-1¼ 391 (400-1¼)
CIRCLING	3280-1 389 (400-1)	3360-1 469 (500-1)	3360-1½ 469 (500-1½)	3460-2 569 (600-2)

Knots	60	90	120	150	180
Min:Sec					