

# VOR RWY 35

GARDEN CITY RGNL (GCK)

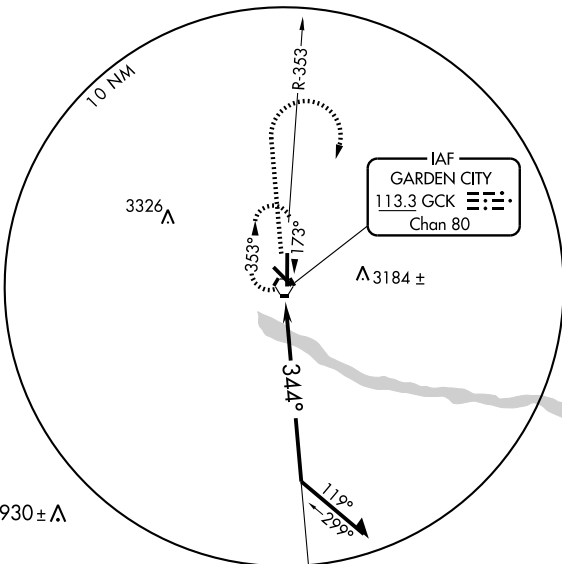
VORTAC GCK <b>113.3</b> Chan <b>80</b>	APP CRS <b>344°</b>	Rwy Idg TDZE <b>2884</b> Apt Elev <b>2890</b>
--	------------------------	---

**▼** Cat. D S-35 visibility increased ¼ mile for inoperative MALS.R.



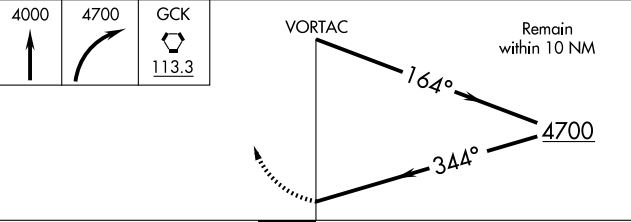
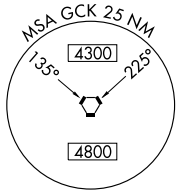
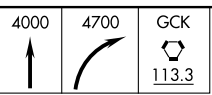
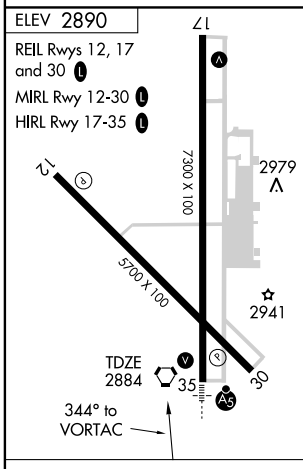
**MISSED APPROACH:** Climb to 4000, then climbing right turn to 4700 direct GCK VORTAC and hold.

ASOS <b>121.325</b>	KANSAS CITY CENTER <b>125.2 269.4</b>	GARDEN CITY TOWER ★ <b>118.15 (CTAF) 254.4</b>	GND CON <b>119.0</b>	UNICOM <b>122.95</b>
------------------------	--	---	-------------------------	-------------------------



NC-2, 22 OCT 2009 to 19 NOV 2009

NC-2, 22 OCT 2009 to 19 NOV 2009



ELEV 2890	ZL
REIL Rwys 12, 17 and 30	
MIRL Rwy 12-30	
HIRL Rwy 17-35	
7300 X 100	2979 A
5700 X 100	2941
TDZE 2884	35
344° to VORTAC	

CATEGORY	A	B	C	D
S-35	3280-½ 396 (400-½)			3280-1 396 (400-1)
CIRCLING	3280-1 391 (400-1)	3340-1 451 (500-1)	3340-1½ 451 (500-1½)	3440-2 551 (600-2)