

VORTAC GCK <b>113.3</b> Chan 80	APP CRS <b>173°</b>	Rwy Idg TDZE Apt Elev	<b>7300</b> <b>2889</b> <b>2891</b>
---------------------------------------	------------------------	-----------------------------	-------------------------------------------

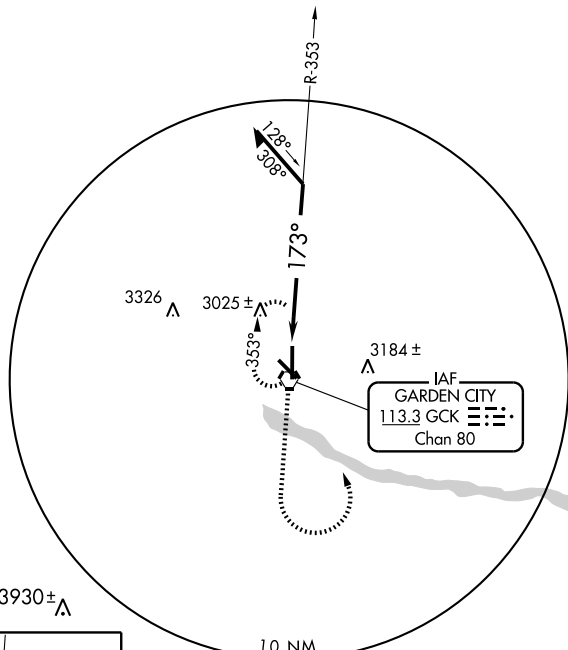
# VOR RWY 17

GARDEN CITY RGNL (GCK)

▼ If local altimeter setting not received, use Dodge City Rgnl altimeter setting and increase all MDAs 140 feet. VDP NA when using Dodge City Rgnl altimeter setting.

MISSED APPROACH: Climb to 4000, then climbing left turn to 4500 direct GCK VORTAC and hold.

ASOS <b>121.325</b>	KANSAS CITY CENTER <b>125.2 269.4</b>	GARDEN CITY TOWER* <b>118.15 (CTAF) 0 254.4</b>	GND CON <b>119.0</b>	UNICOM <b>122.95</b>
------------------------	------------------------------------------	----------------------------------------------------	-------------------------	-------------------------



NC-2, 22 OCT 2009 to 19 NOV 2009

NC-2, 22 OCT 2009 to 19 NOV 2009

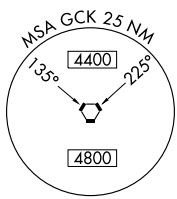
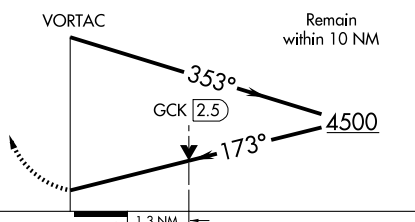
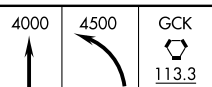
ELEV 2891

REIL Rwy 12, 17 and 30

MIRL Rwy 12-30

HIRL Rwy 17-35

Knots	60	90	120	150	180
Min:Sec					



CATEGORY	A	B	C	D
S-17	3340-1	451 (500-1)	3340-1¼ 451 (500-1¼)	3340-1½ 451 (500-1½)
CIRCLING	3340-1 449 (500-1)	3360-1 469 (500-1)	3360-1½ 469 (500-1½)	3460-2 569 (600-2)