


# RNAV (GPS) RWY 35

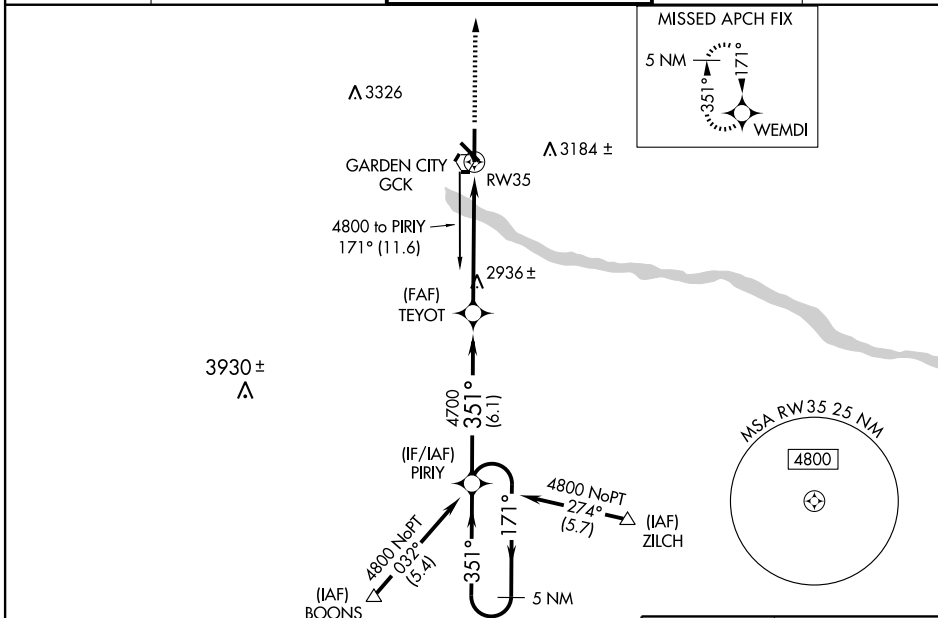
GARDEN CITY RGNL (GCK)

WAAS CH <b>63103</b> W35A	APP CRS <b>351°</b>	Rwy Idg TDZE <b>2885</b> Apt Elev <b>2891</b>	<b>7300</b>
---------------------------------	------------------------	---	-------------

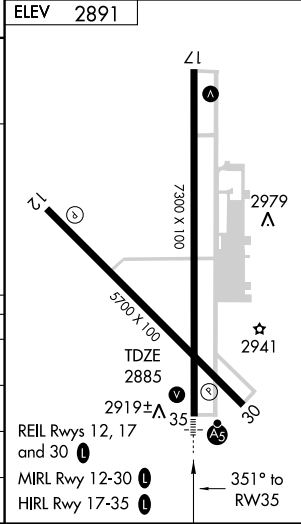
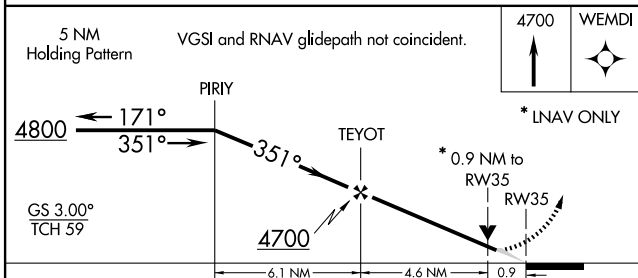
**⚠** Inoperative table does not apply to LNAV Cat D. For inoperative MALSR, increase LNAV/VNAV Cat D visibility to 1. Baro-VNAV NA when using Dodge City Rgnl altimeter setting. For uncompensated Baro-VNAV systems, LNAV/VNAV NA below -20°C (-4°F) or above 43°C (109°F). If local altimeter setting not received, use Dodge City Rgnl altimeter setting and increase all DAs 128 feet and all MDAs 140 feet. DME/DME RNP-0.3 NA. VDP NA when using Dodge City Rgnl altimeter setting.

**MALSR**  
  
**MISSED APPROACH:**  
 Climb to 4700 direct WEMDI and hold.

ASOS <b>121.325</b>	KANSAS CITY CENTER <b>125.2 269.4</b>	GARDEN CITY TOWER * <b>118.15 (CTAF) 0 254.4</b>	GND CON <b>119.0</b>	UNICOM <b>122.95</b>
------------------------	--	---	-------------------------	-------------------------



ELEV	2891
------	------



CATEGORY	A	B	C	D
LPV DA	3135-1/2		250 (300-1/2)	
LNAV/VNAV DA	3169-1/2	284 (300-1/2)	3169-3/4 284 (300-3/4)	
LNAV MDA	3200-1/2	315 (400-1/2)	3200-1 315 (400-1)	
CIRCLING	3280-1 389 (400-1)	3360-1 469 (500-1)	3360-1/2 469 (500-1/2)	3460-2 569 (600-2)

NC-2, 22 OCT 2009 to 19 NOV 2009

NC-2, 22 OCT 2009 to 19 NOV 2009