

RNAV (GPS) RWY 17

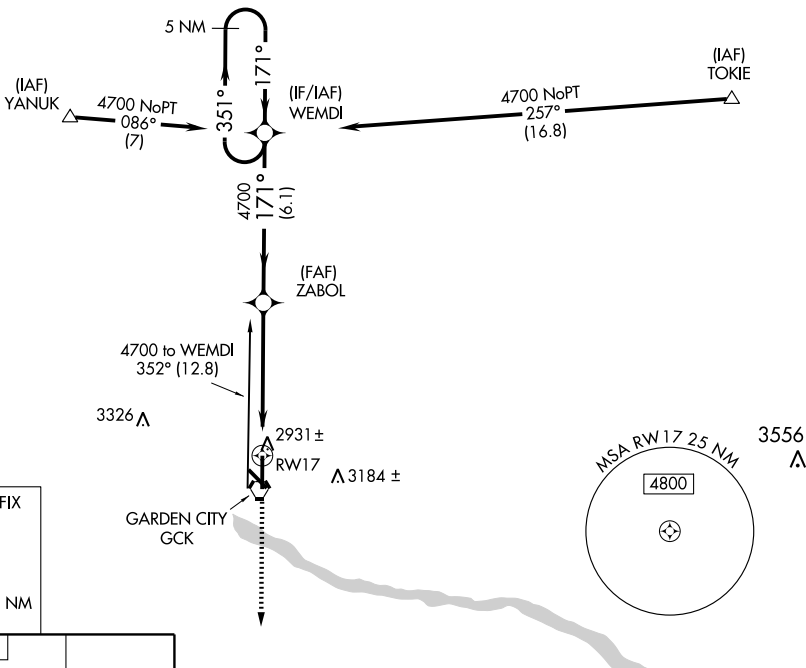
GARDEN CITY RGNL (GCK)

WAAS CH 42803 W17A	APP CRS 171°	Rwy Idg TDZE 2889 Apt Elev 2891	7300 2889 2891
--	------------------------	---	---

Baro-VNAV NA when using Dodge City Rgnl altimeter setting. For uncompensated Baro-VNAV systems, LNAV/VNAV NA below -20°C (-4°F) or above 43°C (109°F). If local altimeter setting not received, use Dodge City Rgnl altimeter setting and increase all DAs 128 feet and all MDAs 140 feet. DME/DME RNP-0.3 NA. VDP NA when using Dodge City Rgnl altimeter setting.

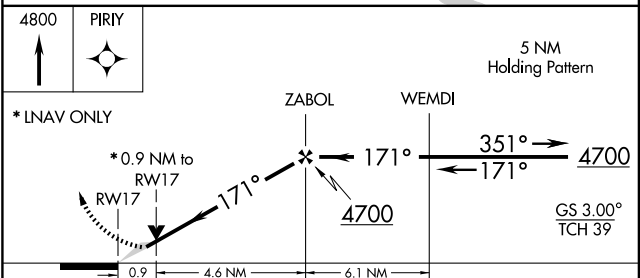
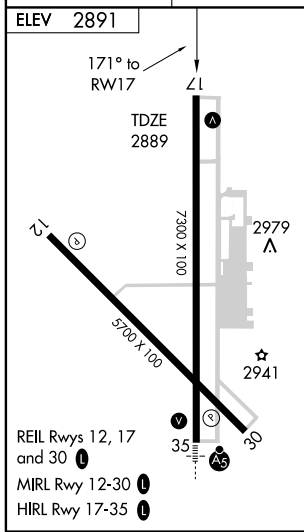
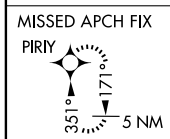
MISSED APPROACH: Climb to 4800 direct PIRY and hold.

ASOS 121.325	KANSAS CITY CENTER 125.2 269.4	GARDEN CITY TOWER* 118.15 (CTAF) 0 254.4	GND CON 119.0	UNICOM 122.95
------------------------	--	--	-------------------------	-------------------------



NC-2, 22 OCT 2009 to 19 NOV 2009

NC-2, 22 OCT 2009 to 19 NOV 2009



CATEGORY	A	B	C	D
LPV DA		3139-1	250 (300-1)	
LNAV/VNAV DA		3217-1¼	328 (400-1¼)	
LNAV MDA		3220-1	331 (400-1)	
CIRCLING	3280-1 389 (400-1)	3360-1 469 (500-1)	3360-1½ 469 (500-1½)	3460-2 569 (600-2)