

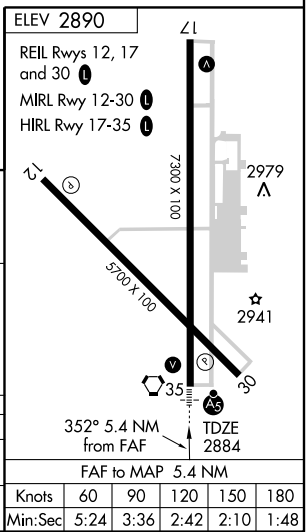
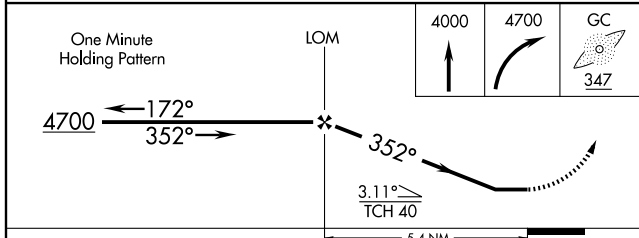
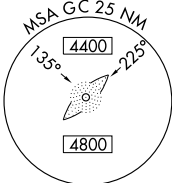
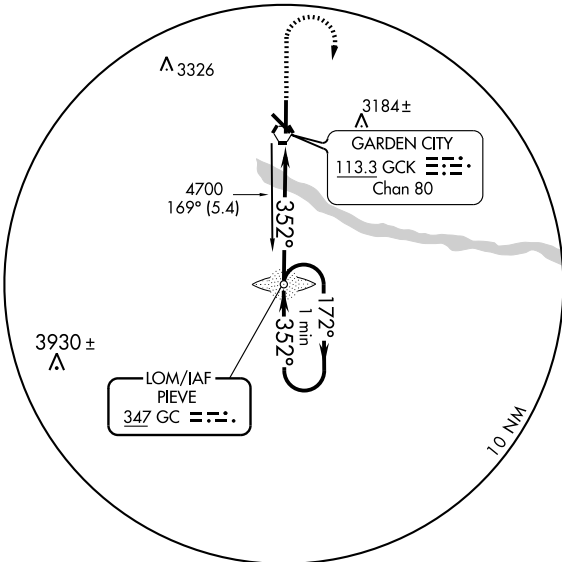
NDB RWY 35

GARDEN CITY RGNL (GCK)

LOM GC 347	APP CRS 352°	Rwy Idg 7300 TDZE 2884 Apt Elev 2890
----------------------	------------------------	--

Cat C S-35 visibility increased ¼ mile for inoperative MALS.	MISSED APPROACH: Climb to 4000, then climbing right turn to 4700 direct GC LOM and hold.
--	--

ASOS 121.325	KANSAS CITY CENTER 125.2 269.4	GARDEN CITY TOWER * 118.15 (CTAF) 0 254.4	GND CON 119.0	UNICOM 122.95
------------------------	--	---	-------------------------	-------------------------



CATEGORY	A	B	C	D
S-35	3240-¾ 356 (400-¾)			3240-1 356 (400-1)
CIRCLING	3280-1 390 (400-1)	3340-1 450 (500-1)	3340-1½ 450 (500-1½)	3440-2 550 (600-2)

Knots	60	90	120	150	180
Min:Sec	5:24	3:36	2:42	2:10	1:48

NC-2, 22 OCT 2009 to 19 NOV 2009

NC-2, 22 OCT 2009 to 19 NOV 2009