

FAIRFIELD, CALIFORNIA

# TACAN RWY 3L

TACAN SUU Chan <b>113</b>	APCH CRS <b>042°</b>	Rwy ldg <b>11,001</b> TDZE <b>36</b> Arpt Elev <b>62</b>
------------------------------	-------------------------	--

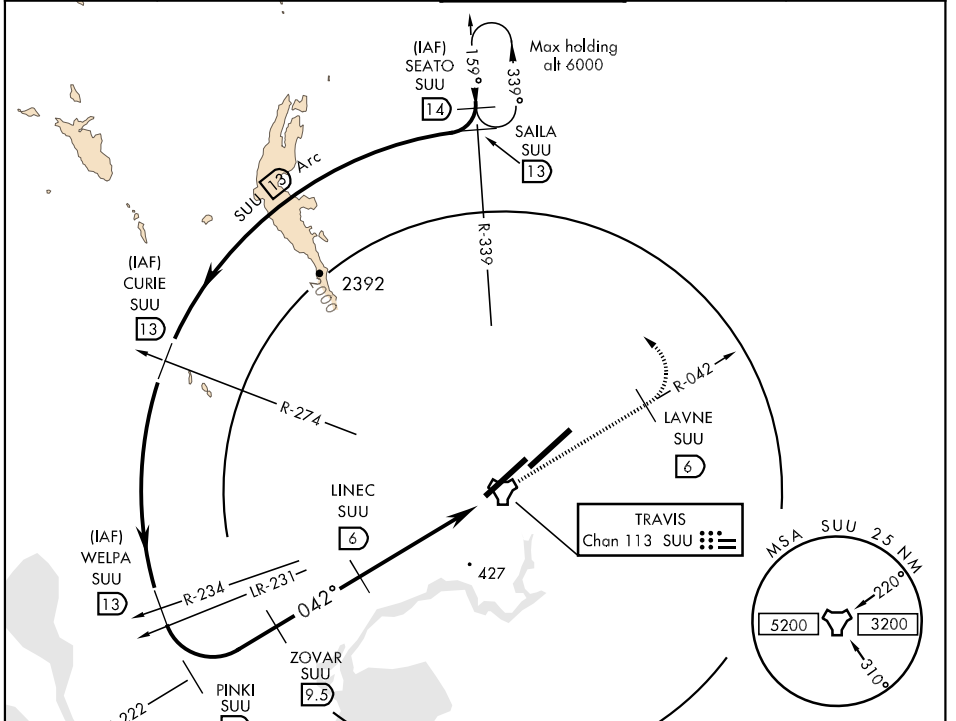
AL-488 [USAF]

TRAVIS AFB (KSUU)

**▼** \* Circling not authorized NW of Rwy 3L-21R.

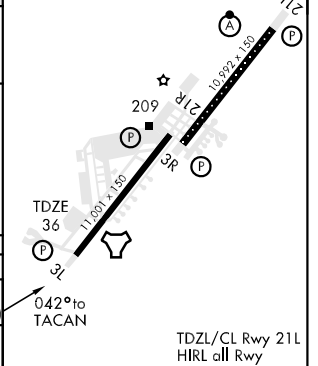
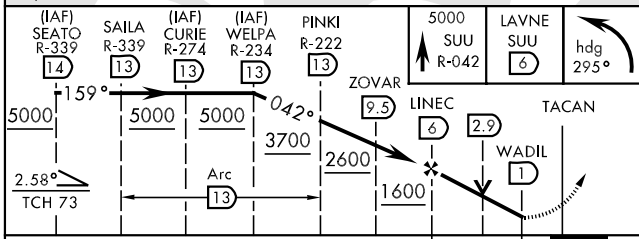
MISSED APPROACH: Climb to 5000 via SUU TACAN R-042 to LAVNE, then turn left via 295° course to intercept SUU R-339 to SEATO and hold, continue climb in hold to 5000.

ATIS <b>116.4 292.125</b>	TRAVIS APP CON <b>119.9 (S) 126.6 (N) 291.0</b>	TRAVIS TOWER <b>120.75 254.4</b>	GND CON <b>121.8 289.4</b>	CLNC DEL <b>127.55 335.8</b>
------------------------------	--	-------------------------------------	-------------------------------	---------------------------------



EMERG SAFE ALT 100 NM  
12,600 FROM "SUU" TACAN

ELEV 62



CATEGORY	A	B	C	D	E
S-3L	740/50 704 (700-1)		740-2 704 (700-2)	740-2¼ 704 (700-2¼)	740-2½ 704 (700-2½)
CIRCLING *	740-1 678 (700-1)		740-2 678 (700-2)	800-2¼ 738 (800-2¼)	1440-3 1378 (1400-3)

FAIRFIELD, CALIFORNIA  
Amdt 1 09155

38°16'N-121°56'W

TRAVIS AFB (KSUU)

# TACAN RWY 3L

SW-2, 22 OCT 2009 to 19 NOV 2009

SW-2, 22 OCT 2009 to 19 NOV 2009