

FAIRFIELD, CALIFORNIA

# RNAV (GPS) RWY 21R

APCH CRS **212°**  
 Rwy ldg **11,001**  
 TDZE **53**  
 Arpt Elev **62**

AL-488 [USAF]

TRAVIS AFB (KSUU)

**▼** \* Circling not authorized NW of Rwy 3L-21R.  
 DME/DME RNP-0.3 NA

MISSED APPROACH: Climbing left turn to 3700 direct CIMEB and hold. Climb in holding authorized.

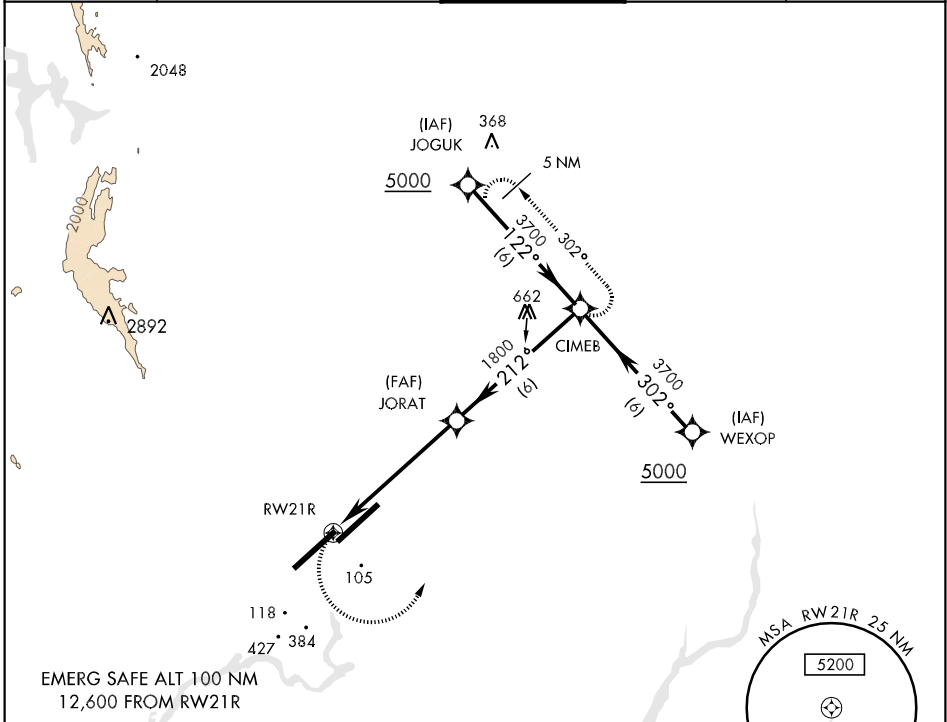
ATIS  
**116.4 292.125**

TRAVIS APP CON  
**119.9 (S) 126.6 (N) 291.0**

TRAVIS TOWER  
**120.75 254.4**

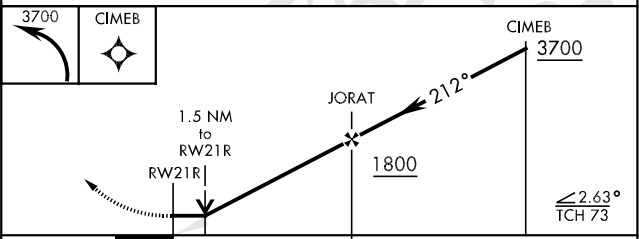
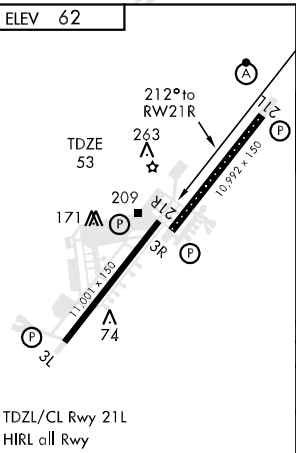
GND CON  
**121.8 289.4**

CLNC DEL  
**127.55 335.8**



SW-2, 22 OCT 2009 to 19 NOV 2009

SW-2, 22 OCT 2009 to 19 NOV 2009



CATEGORY	A	B	C	D	E
LNAV MDA	560/50	507 (500-1)	560-1½	507 (500-1½)	560-1¾ 507 (500-1¾)
CIRCLING *	560-1 498 (500-1)		560-1½ 498 (500-1½)	800-2¼ 738 (800-2¼)	1440-3 1378 (1400-3)

FAIRFIELD, CALIFORNIA  
 Orig 09239

38°16'N-121°56'W

TRAVIS AFB (KSUU)

# RNAV (GPS) RWY 21R