

FAIRFIELD, CALIFORNIA

# RNAV (GPS) RWY 21L

APCH CRS <b>212°</b>	Rwy ldg <b>10,992</b>
	TDZE <b>58</b>
	Arpt Elev <b>62</b>

AL-488 [USAF]

TRAVIS AFB (KSUU)

**▼** \* When ALS inop, increase CAT A RVR to 50 and vis to 1 mile, CAT B RVR to 60 and vis to 1 ¼ miles, CAT C vis to 2 ¼ miles, CAT D vis to 2 ½ miles, and CAT E vis to 2 ¾ miles.

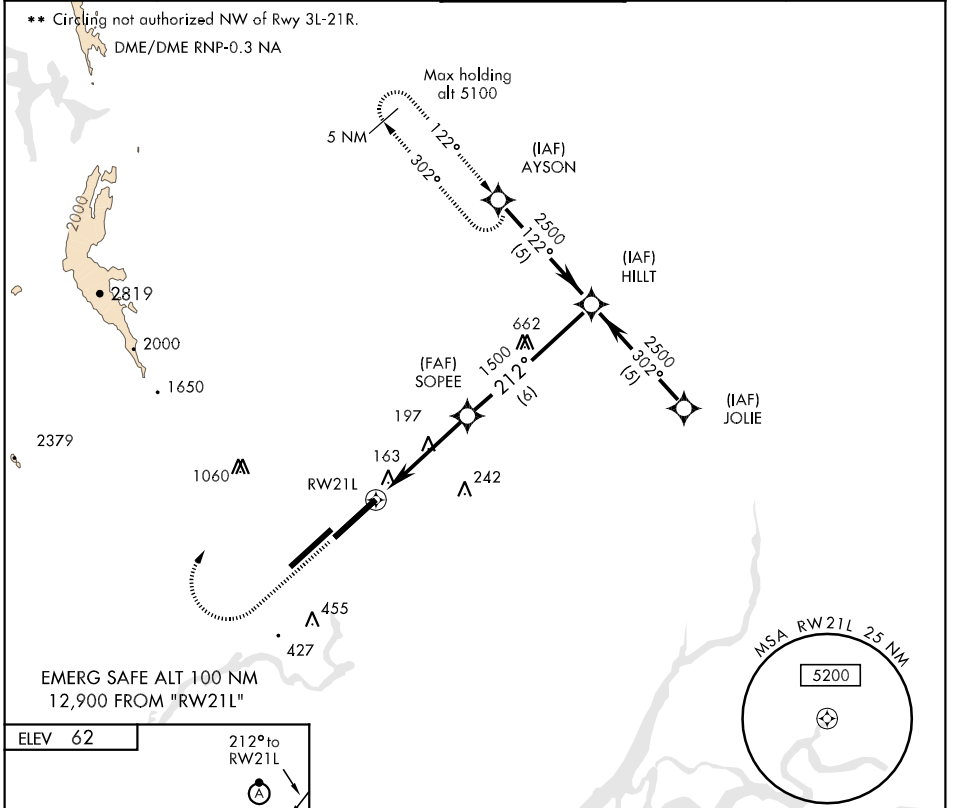


MISSED APPROACH: Climbing right turn to 4100 direct AYSON and hold.

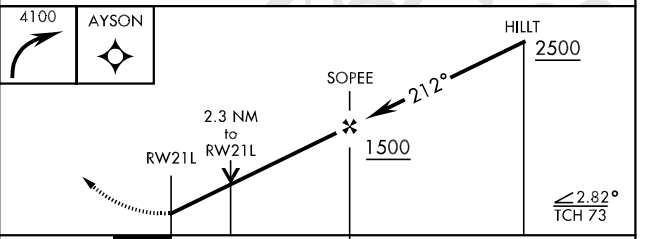
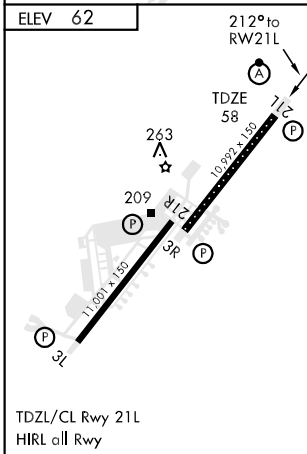
ATIS <b>116.4 292.125</b>	TRAVIS APP CON <b>119.9 (S) 126.6 (N) 291.0</b>	TRAVIS TOWER <b>120.75 254.4</b>	GND CON <b>121.8 289.4</b>	CLNC DEL <b>127.55 335.8</b>
------------------------------	--	-------------------------------------	-------------------------------	---------------------------------

\*\* Circling not authorized NW of Rwy 3L-21R.

DME/DME RNP-0.3 NA



EMERG SAFE ALT 100 NM  
12,900 FROM "RW21L"



CATEGORY	A	B	C	D	E
LNAV MDA *	800/24 742 (800-1½)	800/40 742 (800-¾)	800-1¾ 742 (800-1¾)	800-2 742 (800-2)	800-2½ 742 (800-2½)
CIRCLING **	800-1 738 (800-1)	800-1¼ 738 (800-1¼)	800-2¼ 738 (800-2¼)	800-2½ 738 (800-2½)	1440-3 1378 (1400-3)

FAIRFIELD, CALIFORNIA  
Orig 09071

38° 16' N - 121° 56' W

TRAVIS AFB (KSUU)

# RNAV (GPS) RWY 21L

SW-2, 22 OCT 2009 to 19 NOV 2009

SW-2, 22 OCT 2009 to 19 NOV 2009